

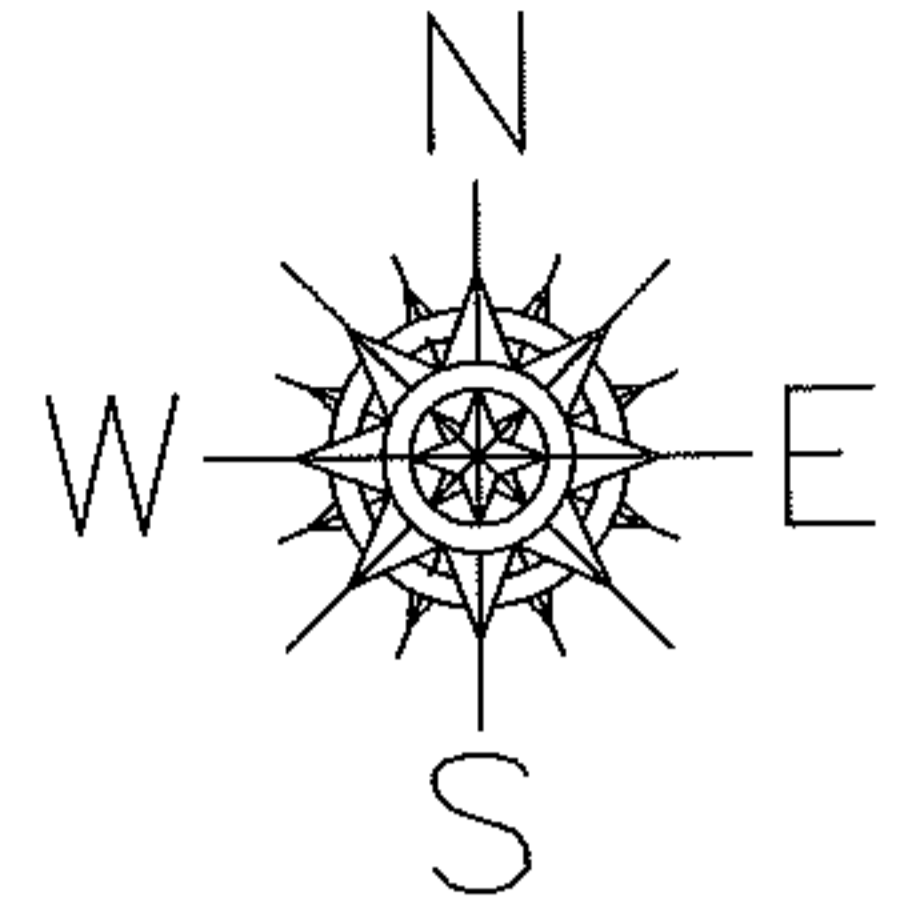
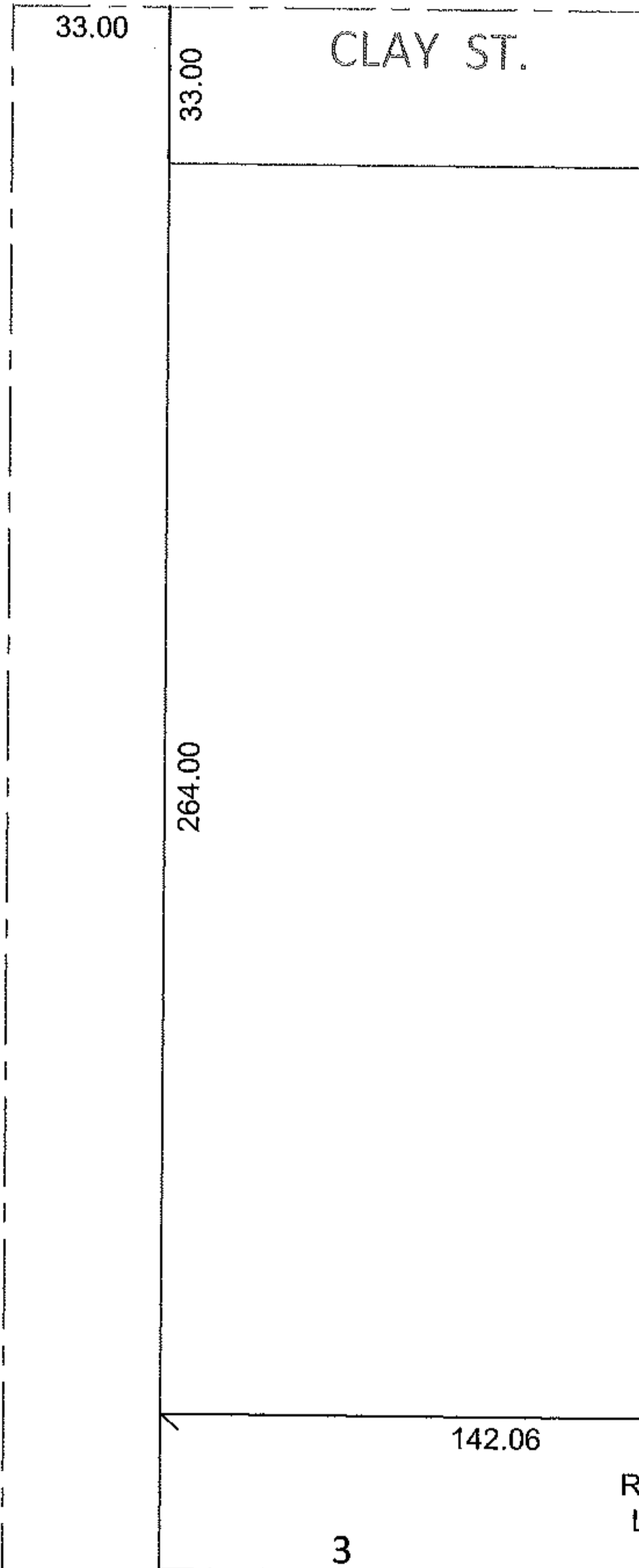
PARENT PARCEL: 18-00-021-105-012

CHILD PARCEL: 18-00-021-105-018, -019

11-00235

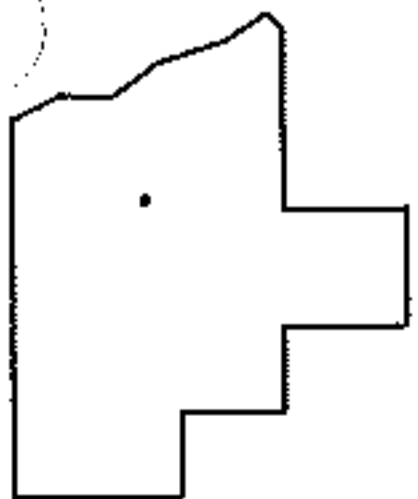
STARTING POINT: INTERSECTION OF C/L OF S.R.58 AND C/L OF CLAY ST.

N.MAIN ST.(S.R.58)



C.C. & ST. L. R.R.

18-00-021-105-019
10.06 X 33



SPLITS/DEEDS PROCESSED

LORAIN COUNTY TAX MAP DEPARTMENT
226 MIDDLE AVE. ELYRIA, OHIO

SURVEYED BY: JON D. BRUNER

CLOSURE: .01:10,000

MAP PAGE(S): 18-00-021-C

APPROVED BY: RRM DATE: 9-23-11

SCALE: 1" = 50' PRIOR INST.: 20050056604