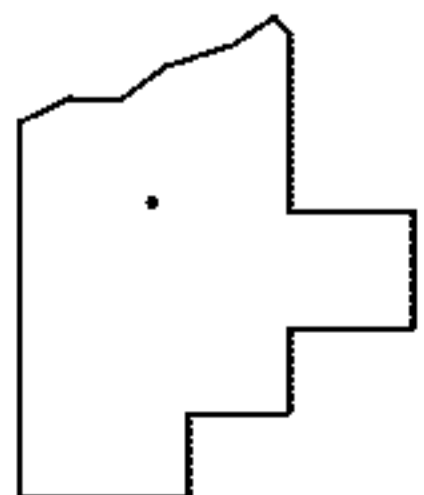
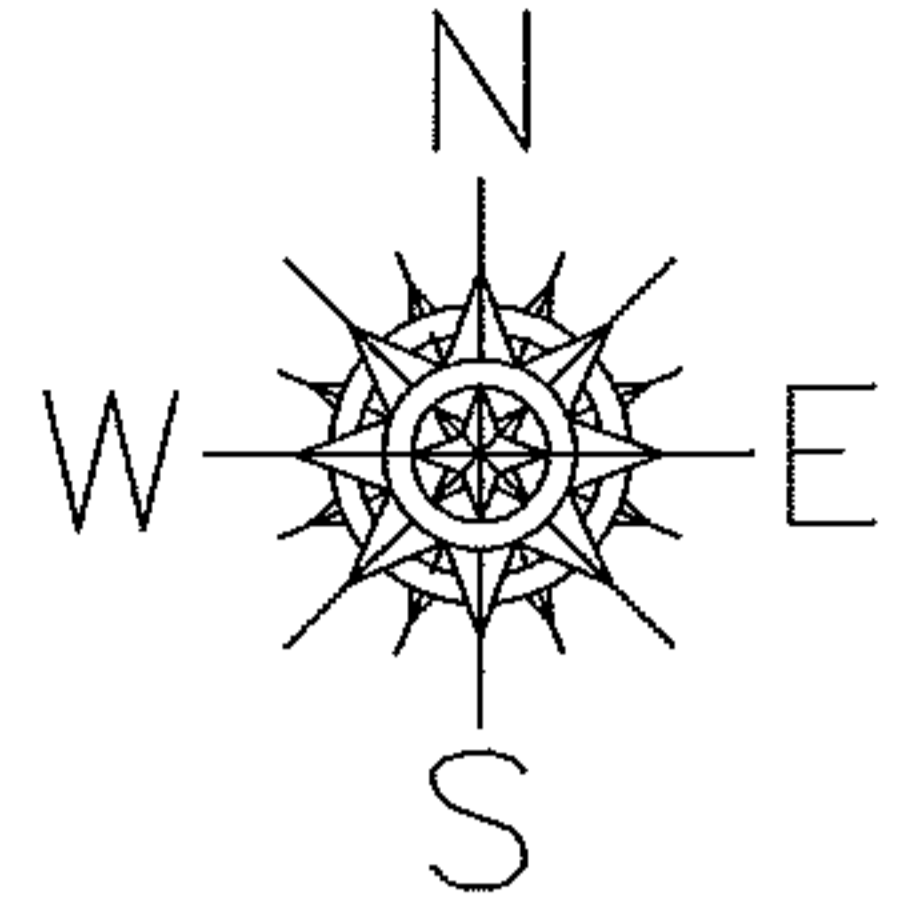
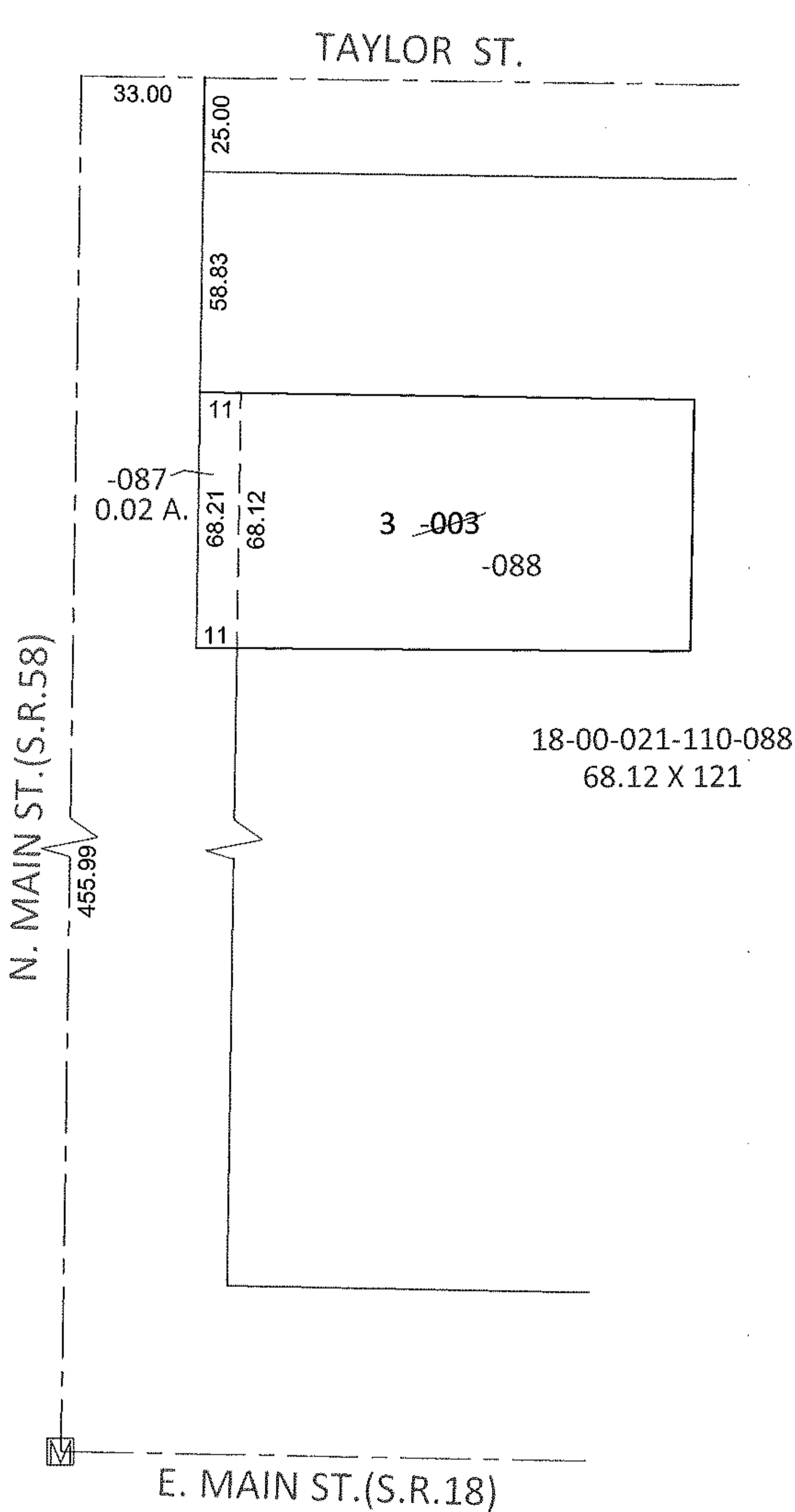


PARENT PARCEL: 18-00-021-110-003

CHILD PARCEL: 18-00-021-110-087, -088

STARTING POINT: AT A MON BOX AT THE INTERSECTION OF C/L OF S.R.58 AND C/L OF S.R.18

11-00233



SPLITS/DEEDS PROCESSED

LORAIN COUNTY TAX MAP DEPARTMENT
226 MIDDLE AVE. ELYRIA, OHIO

SURVEYED BY: JON D. BRUNER

CLOSURE: .00:10,000

MAP PAGE(S): 18-00-021-C

APPROVED BY: RRM DATE: 9-23-11

SCALE: 1"= 50' PRIOR INST.: 19990599825