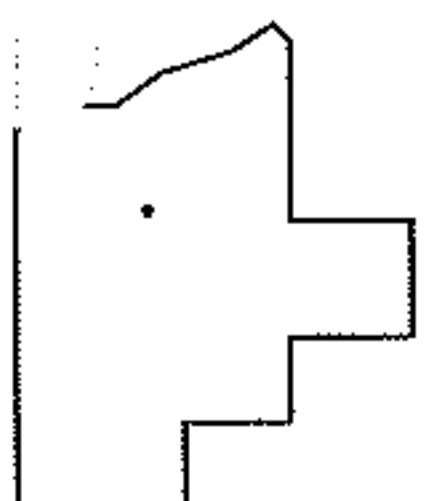
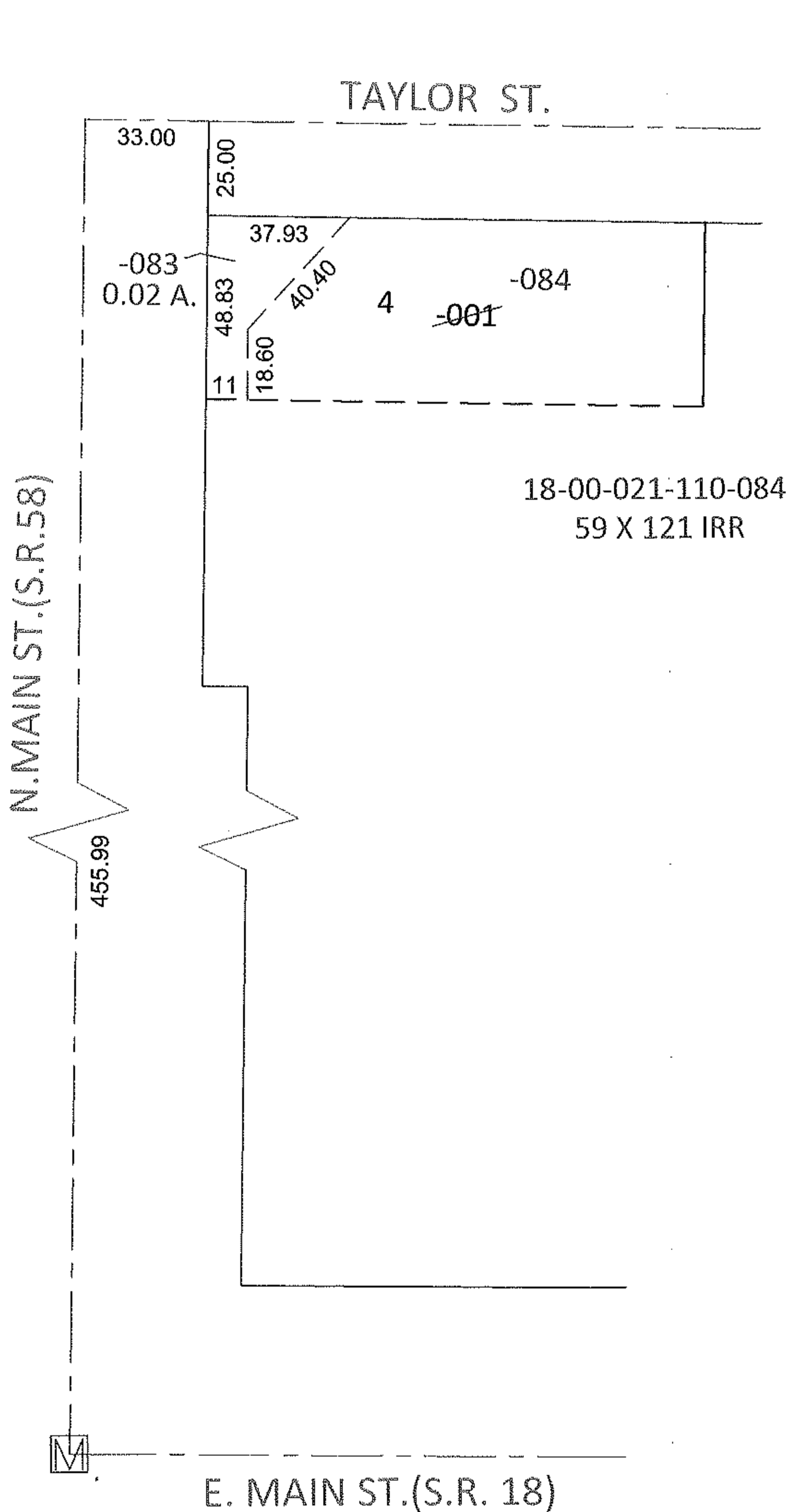


PARENT PARCEL: 18-00-021-110-001

CHILD PARCEL: 18-00-021-110-083, -084

STARTING POINT: AT A MON BOX AT INTERSECTION OF C/L OF S.R.58 AND C/L OF S.R.18

11-00231



**SPLITS/DEEDS PROCESSED**

LORAIN COUNTY TAX MAP DEPARTMENT  
226 MIDDLE AVE. ELYRIA, OHIO

SURVEYED BY: JON D. BRUNER

CLOSURE: .01:10,000

MAP PAGE(S): 18-00-021-C

APPROVED BY: RRM DATE: 9-23-11

SCALE: 1"= 50' PRIOR INST.: 19990599825