

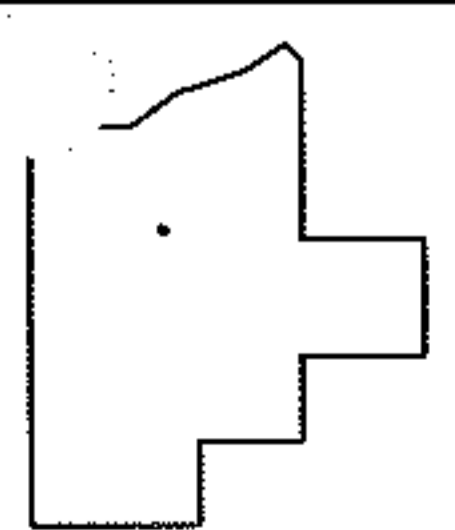
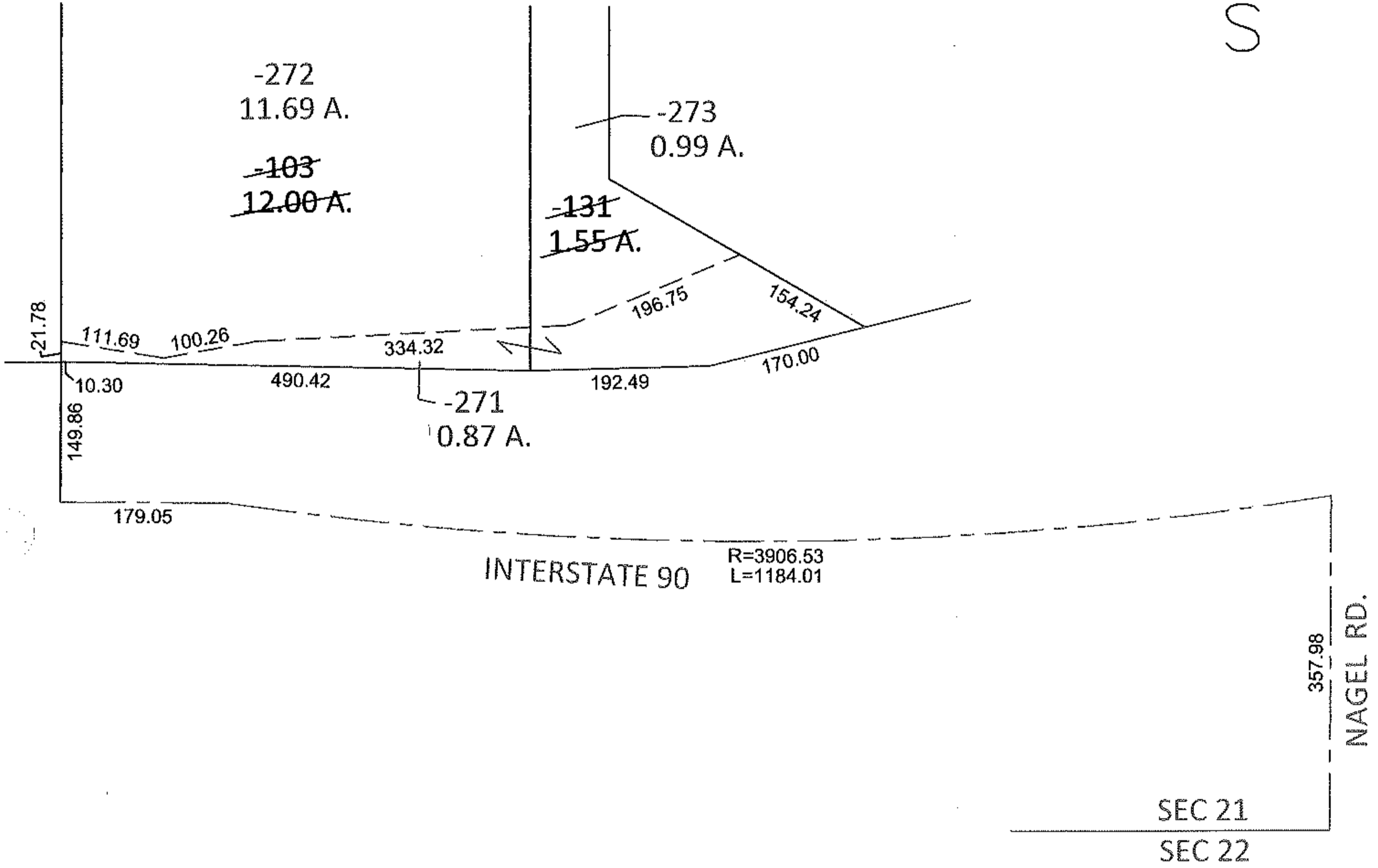
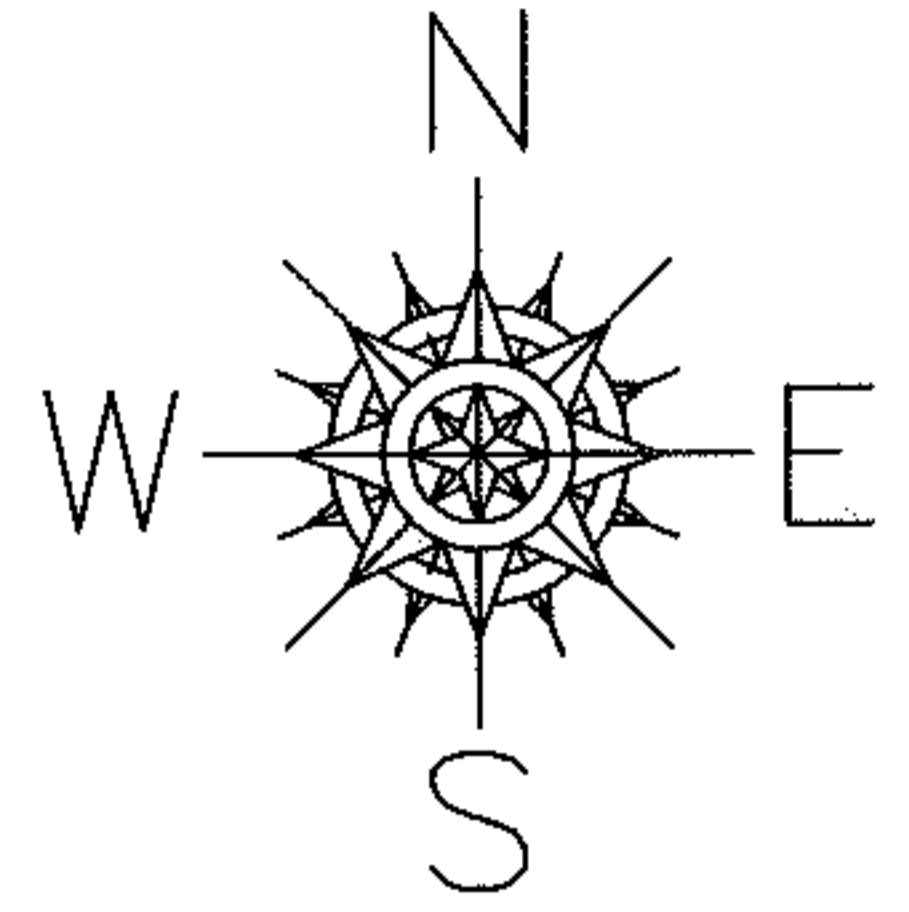
RASTER

PARENT PARCEL: 04-00-021-000-103, -131

CHILD PARCEL: 04-00-021-000-271 THRU -273

STARTING POINT: INTERSECTION OF C/L OF NAGEL RD. AND SOUTH LINE OF SEC.21

11-00222



SPLITS/DEEDS PROCESSED

LORAIN COUNTY TAX MAP DEPARTMENT
226 MIDDLE AVE. ELYRIA, OHIO

SURVEYED BY: WILLIAM J. SALA

CLOSURE: .01:10,000

MAP PAGE(S): 4-00-021-H

APPROVED BY: RRM DATE: 1-11-11

SCALE: 1"= 200 PRIOR INST.: 20060166305