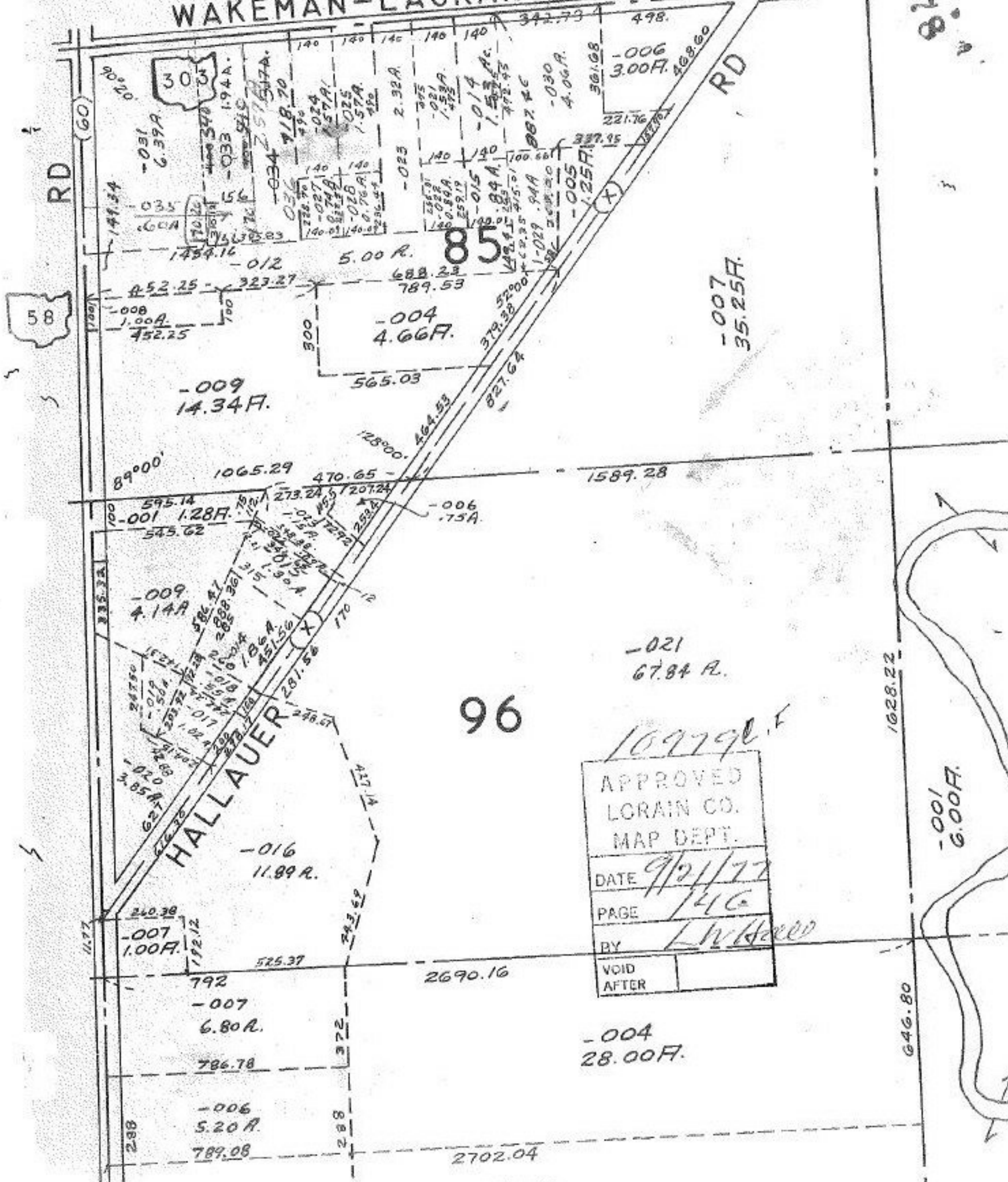


DV 1157 P. 507

10979

WAKEMAN-LAGRANGE-RICHFIELD



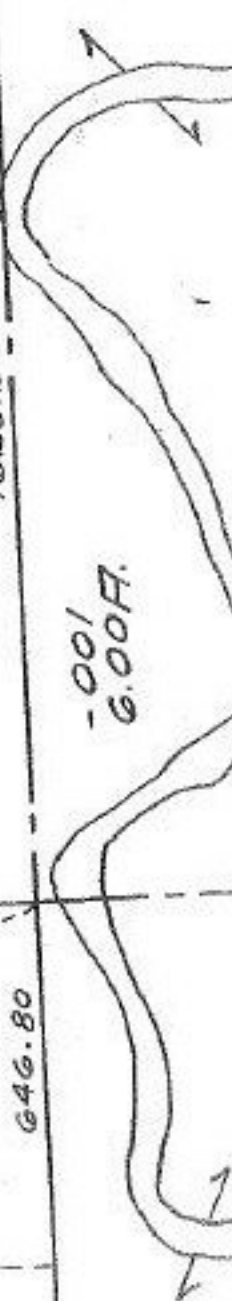
58

96

HALLAUER

10979

APPROVED
LORAIN CO.
MAP DEPT.
DATE 9/21/77
PAGE 146
BY L. W. H. [Signature]
VOID AFTER



-001 6.00A.

-004 28.00A.

-007 35.25A.

-021 67.84 A.

-009 14.34A.

-004 4.66A.

-001 1.28A.

-009 4.14A.

-007 1.00A.

-007 6.80A.

-006 5.20A.

789.08

2690.16

2702.04

1028.22

646.80

RD (60)

RD (60)

RD