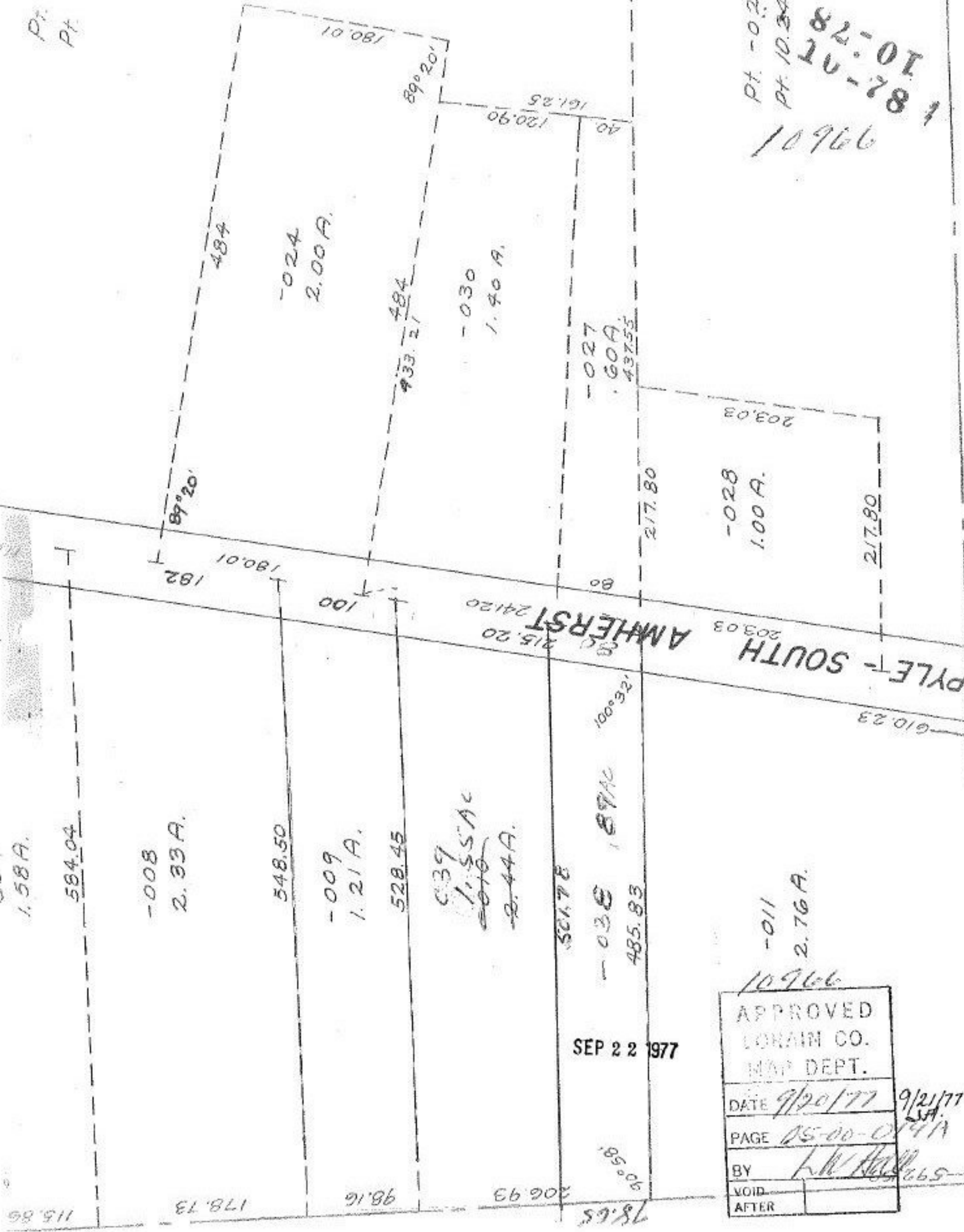


Pt.
Pt.

10966
82-01
10-78
20-78
Pt. -0.25
Pt. 10.24



SEP 22 1977

APPROVED	
LORAIN CO.	
MAP DEPT.	
DATE	9/20/77
PAGE	05-00-014A
BY	L.W. Hall
VOID	
AFTER	

9/21/77
SJA