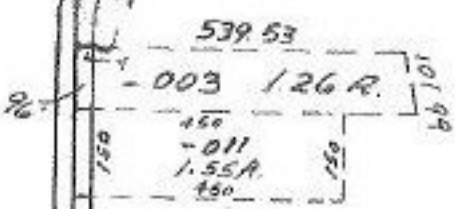


43.00 FT.

10962

80

924



37

C.F. 10-5-77  
-012  
89.27 A.

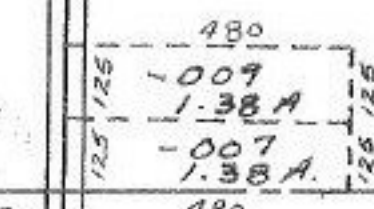
APPROVED  
LORAIN CO.  
MAP DEPT.

DATE 9/16/77

PAGE 14C

BY L.W. H...  
VOID AFTER

SEP 20 1977



2592

203  
10 FT.  
300

-001  
13.33 FT.

-002  
6.67 FT.

-003  
30.00 FT.

44

11.24 AC  
B00

-007  
26.00 A  
21.43 A

-004  
23.00 FT.

2440.80

-001 7.00 FT.

412.76  
-007  
2.18 A  
412  
454.88  
-008  
1.25 A

-003  
1.00 FT.  
220

299.62  
-006  
1.33 FT.  
200

10-11-77