

10961

RD.

283	005	38 A
200A	400.22	
-007	2.00A	
482		
-008	3.00A	
512.64		

-066 068
44.62 A. 44.23A

067
544C

96°35'40"
RD.

-002
37.50 A.

102

10961

APPROVED
LORAIN CO.
MAP DEPT.
DATE 9/16/77
PAGE 70A
BY L.W. HARR
VOID AFTER

SEP 20 1977

-008
30.65 A.

-010
23.00 A.

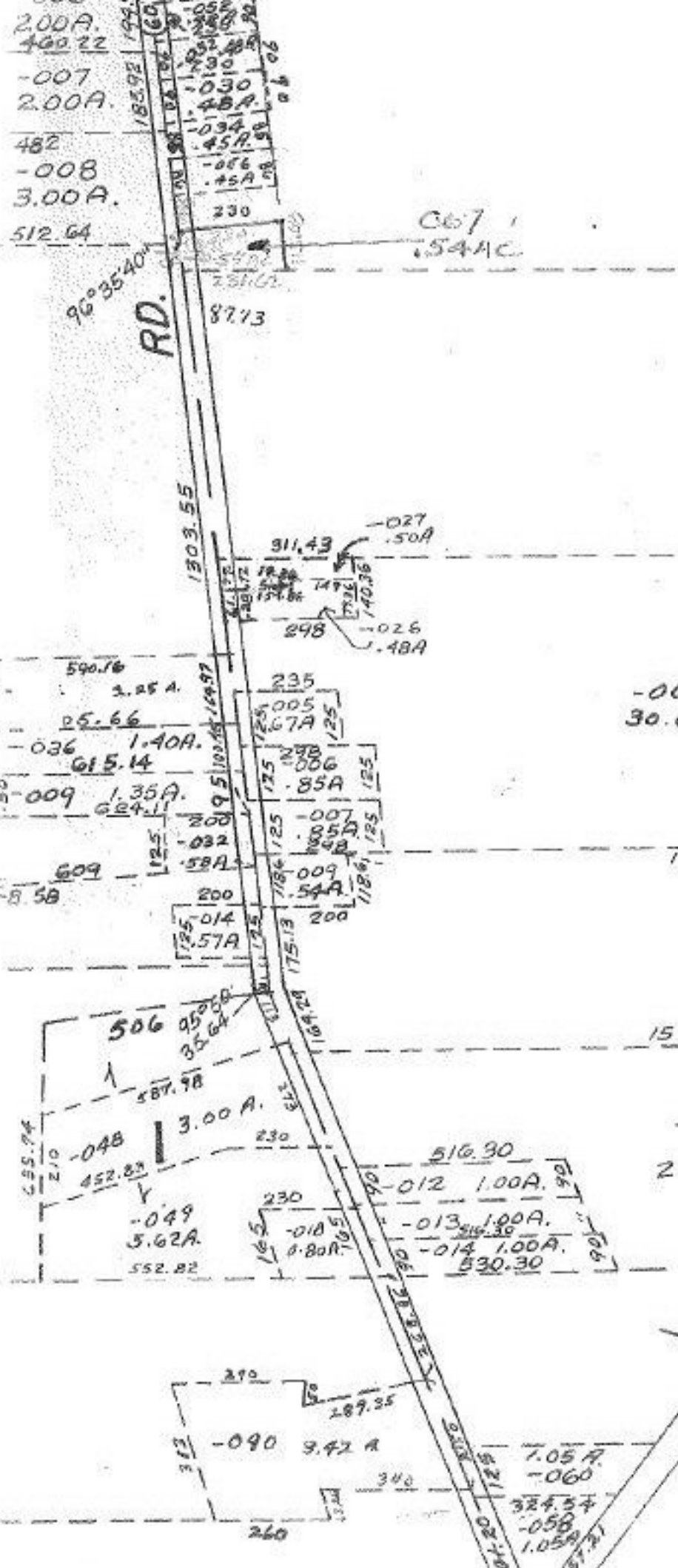
1510.34

-011
22.00 R.

-015
18.00 A.

-059
12.90 A.

102



87

454.79

362.55

713.39

1712.70