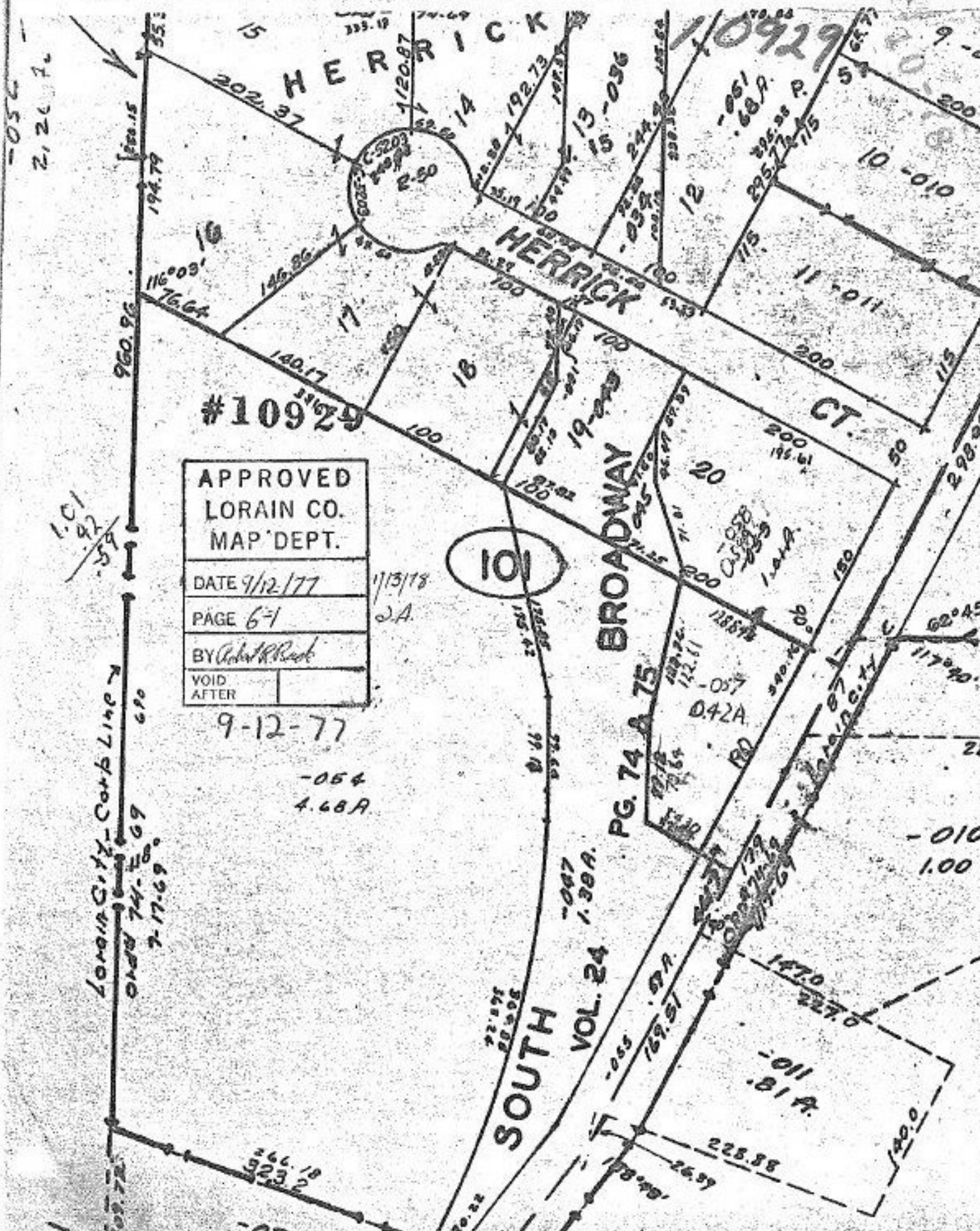


-056
2,267



#10929

APPROVED
LORAIN CO.
MAP DEPT.

DATE 9/12/77

PAGE 67

BY Robert R. Rade

VOID
AFTER

9-12-77

-054
4.68A

~~L.C.
1-22
-52~~

Lorain City - Corb Line

Odd 74-50-69
7-17-69

101

VOL. 24

PG. 74 A 75

10929

-010
1.00

-011
1.81A

-050