

1092210

SEE 1-E

1089.98

35.48 45.61

57A

210

81.075

523.48

-024

646.25

.95A

19

85.21

51

118.5

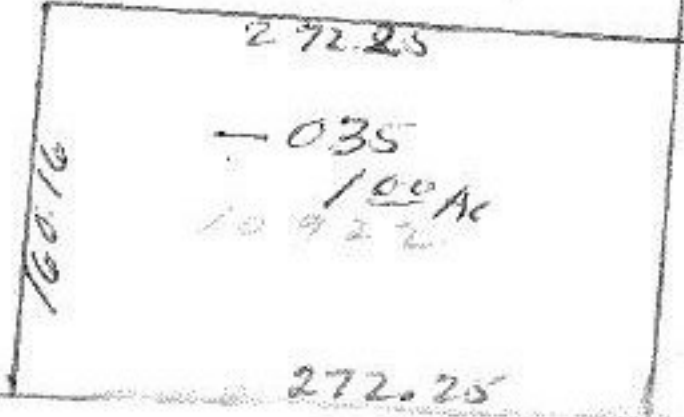
~~026~~  
10-16A

036  
17.96 Ac

10922

APPROVED LORAIN CO. MAP DEPT.	
DATE	9/7/77
PAGE	1-00-032A
BY	L.W. Hall
VOID AFTER	

SEP 8 1977



1275.51

S.M.

272.25

-028  
329A

-019

3 10 A