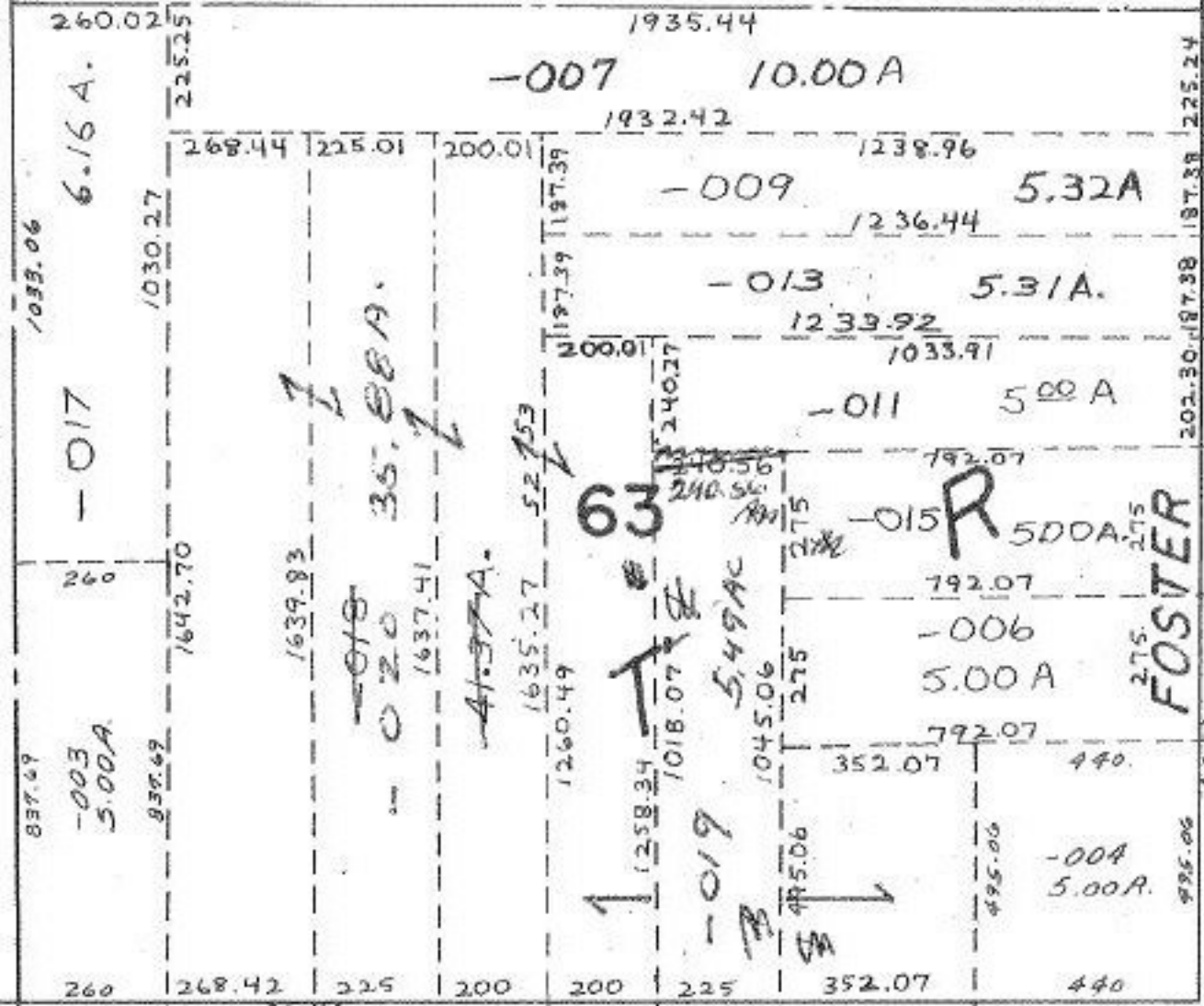


10910

-003
88.92 A.

62

172.90
183.41
204.10
432.25
-004
2.79 A.
346.42



A

C.F. 9-13-77
SEP 6 1977

APPROVED
LORAIN CO.
MAP DEPT.

DATE 9/2/77

PAGE 194

BY L.W. Haas
VOID AFTER

PENFIELD TWP.

SCALE: 1" = 400'