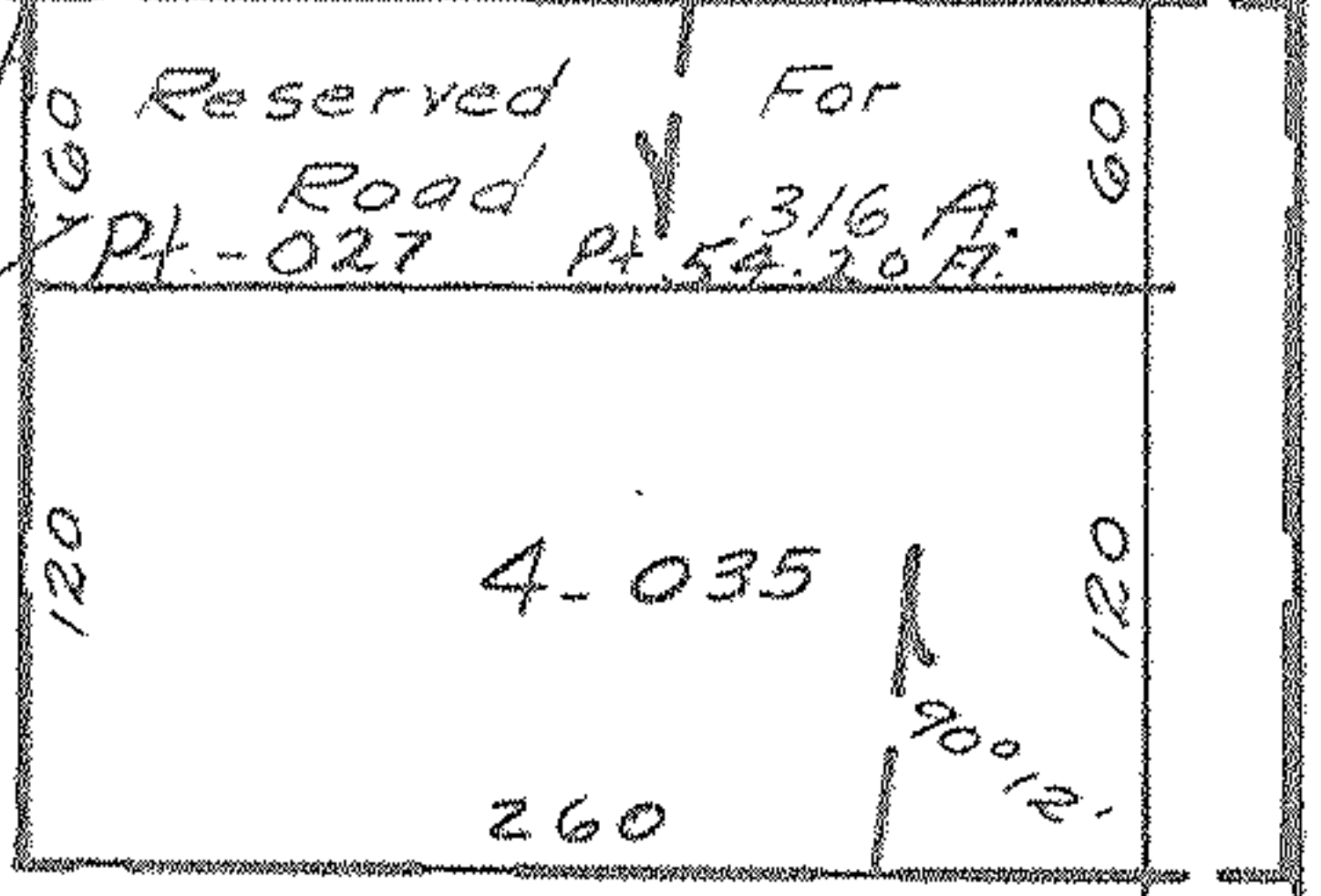


10892

M 65.50
31.50

A 1163.09

-034
1.00A.



808.92

315.29

58.13

290.40

72.60

15.0

4.10

-092
31.50A

634.48

-091
5.00A.C

10892

10892
 APPROVED
 LORAIN CO.
 MAP DEPT.
 DATE 8/30/77
 PAGE 9-00-090B
 BY L.V. Hall
 VOID AFTER

-079 -092
36.50A.

315.14

560

560

-070
-14A.

363
-058
.83A.

363
300
3-057

-037

-038

300
363
-039 .50A.

-040
.70A.

-041
.50A.

-042
.69A.

300
2
-050

-051

1.044
300
275.45

-046
1.00A.

SEE 10-E

1160

1568.11

10892

N 0° 24' W

148.02

210.12