

82

82

ELYRIA TWINSBURG

PT. -003
PT. 800F.

500

PT. 11-00-006-500-001
PT. 49.91 F.

ST. L.

C. C. C.

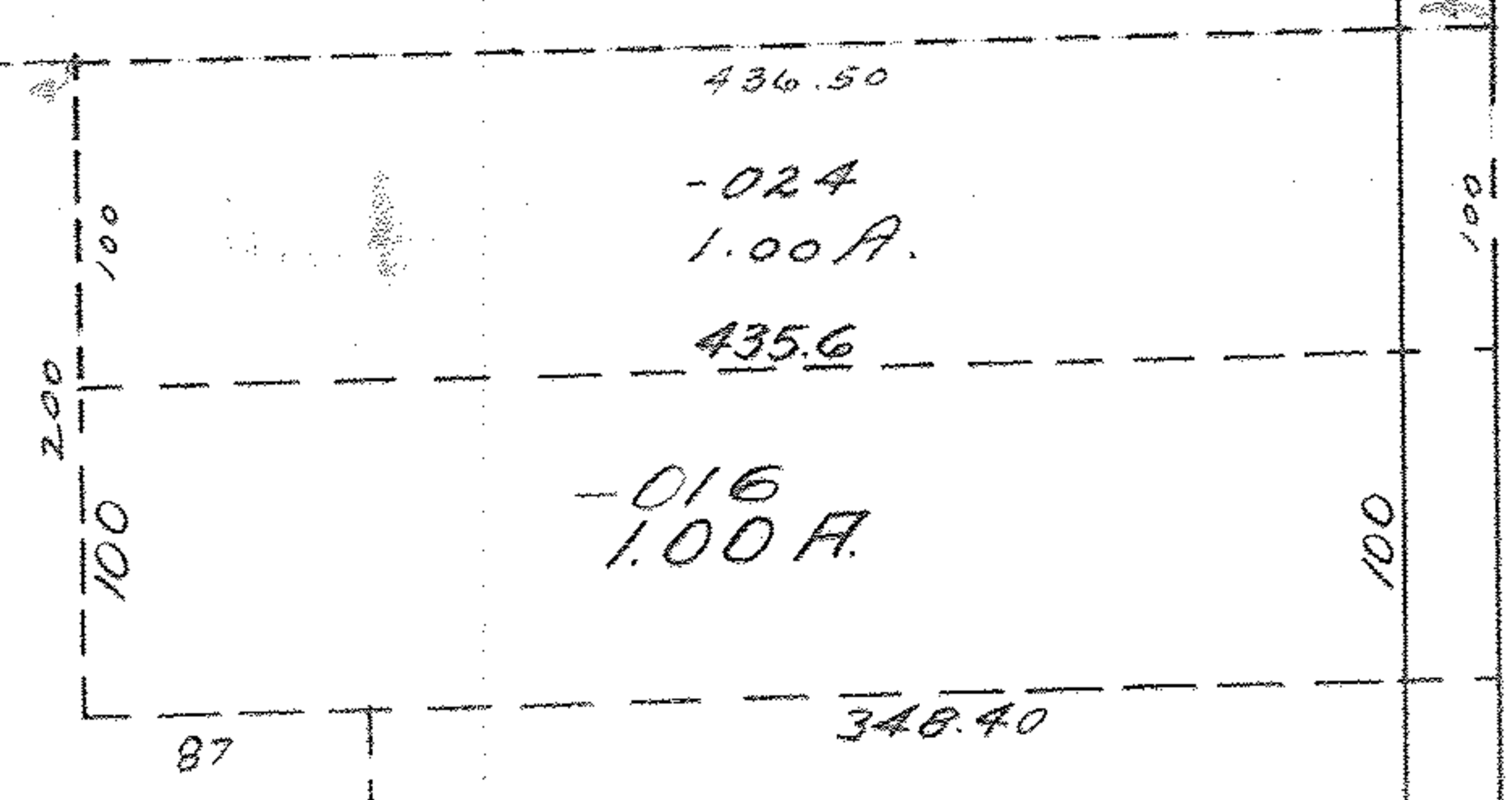
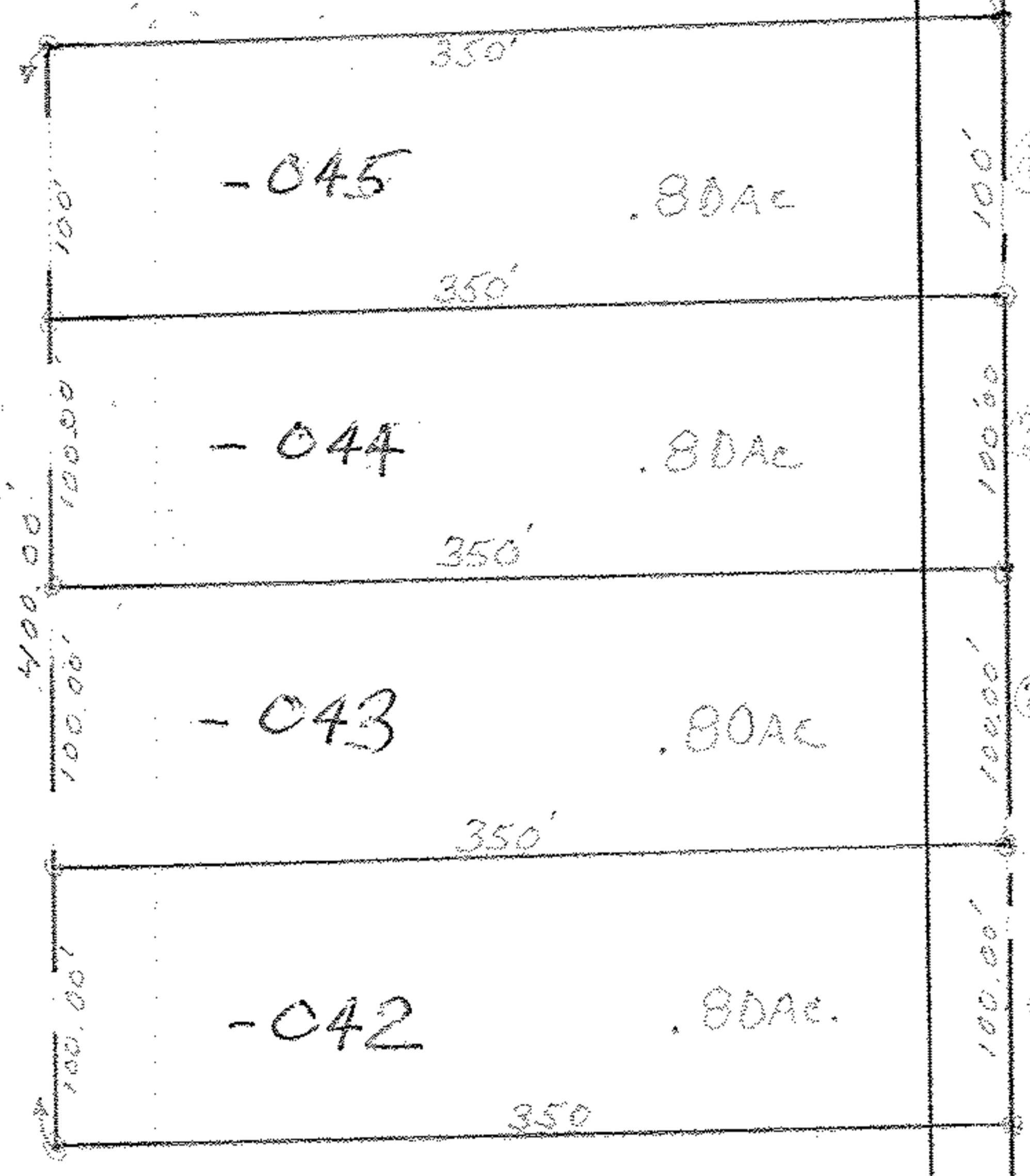
RD.

RD.

SEE 11-00-016-A

-031
58.00 A.
-046
55.28
55.31 A.

APPROVED
LORAIN CO.
MAP DEPT.
DATE 8-23-77
PAGE 11-00-016B
BY L. W. HADSTAM
VOID AFTER 10-1-73
C.F. 8-30-77
AUG 24 1977



-030
9.98 A.

SEE 11-00-005-A