

WHITEHEAD

825

10857

10-78

LAGRANGE TWP.

WAKEMAN - LAGRANGE - RICHFIELD

LOTS 4, 5, 1, 17, 2



410.46
205.28

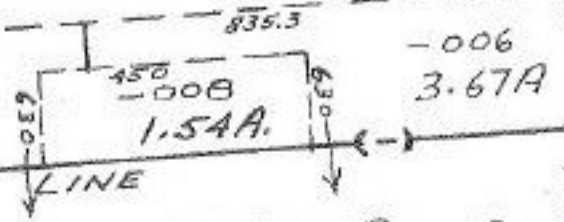
205.18

-001
76.10 A.

016
5992 Ac
6772 A.

44

-007
16.29 A.



CORP.

10857

APPROVED
LORAIN CO.
MAP DEPT.
DATE 8/17/77
PAGE 15 B
BY LW Hall
VOID AFTER

8/25/77
J.H.

SEE
15-00-045-A

AUG 18 1977

WEST

LAGRANGE

PROSPER

45