

10852

RD.

161.59
1.004
0.32
270
161.89
384.90
1663.04
325.79

~~033~~
56.57A
035
55.12 AC

987.92
270.08
4.29 AC
-024
556.70
-026 1.40 A.
513.52

19.04 A.
-031

1035.85

PEASELEY

SEP 1 1977

APPROVED
LORAIN CO.
MAP DEPT.

DATE 8/17/77

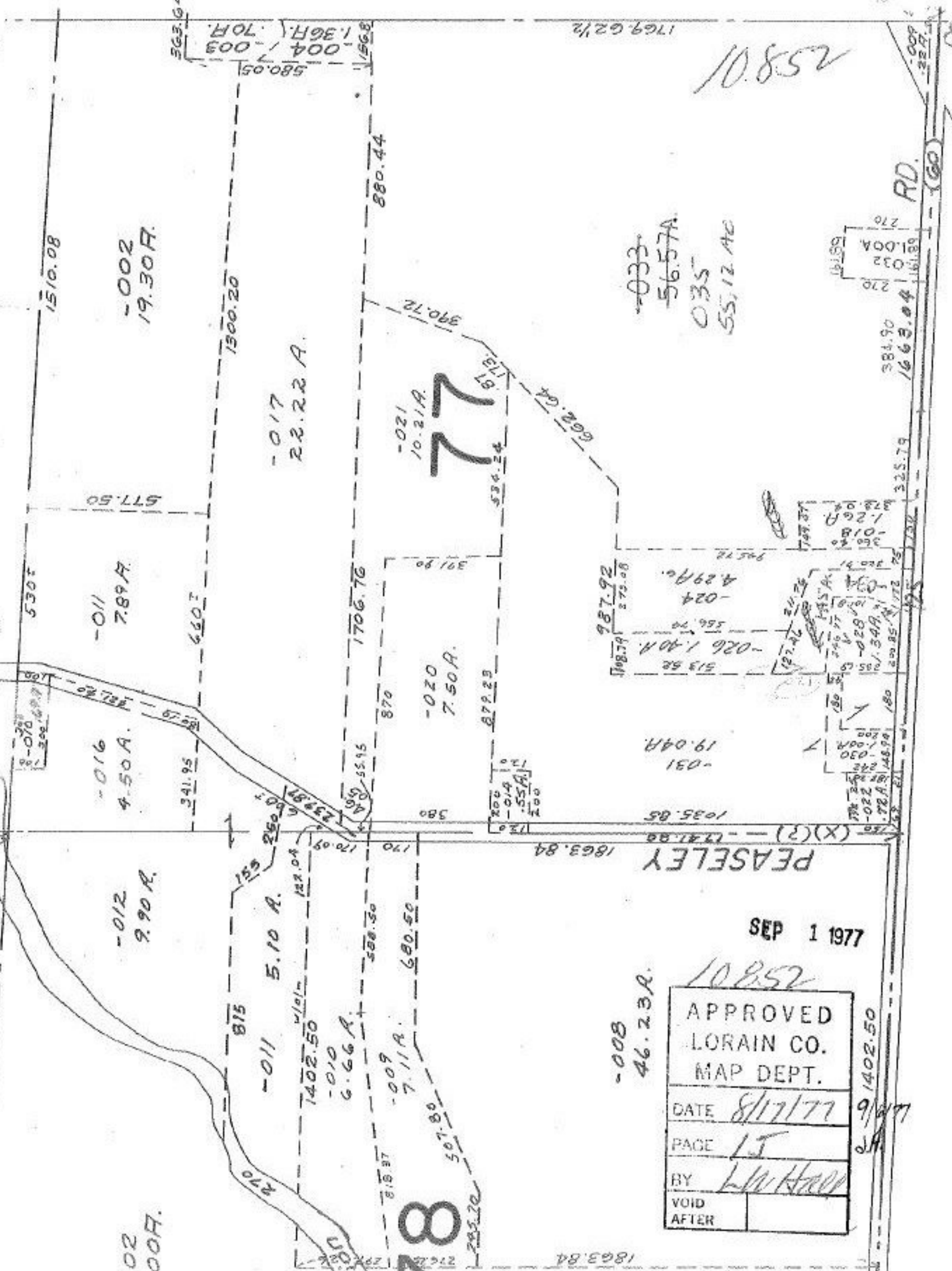
PAGE 15

BY L.W. HARR

VOID AFTER

-008
46.23A.

1402.50
9/6/77



-002
19.30A.

-011
7.89A.

-016
4.50A.

-012
9.90A.

-017
22.22A.

-020
7.50A.

-021
10.21A.

-010
6.66A.

-009
7.11A.

-031
19.04A.

-024
4.29A.

-026
1.40A.

002
4.00A.

78

77

10852

1769.62 1/2

580.05
1.36A.
1.70A.
563.64

1510.08

1300.20

880.44

390.72

173

534.24

301.90

870

580

170

588.50

680.50

507.80

285.20

270.20

1863.84

1863.84

1035.85

19.04 A.

513.52

987.92

270.08

4.29 AC

556.70

-026 1.40 A.

513.52

19.04 A.

1035.85

127.22

211.25

145.5 A.

120.90

1.20 A.

130.00

179.37

195.72

170

170

170

170

170

170

170

170

170

170

170

170

170

170

170

170