

746.33 Baxters N.E. Corner  
St. Elmer

#10826 SEE 5-6

319.23

955.35  
173.83

SEE 5-6  
10  
PT 2448  
1745

20

-043  
2.66

1760.85

-049  
8.46 AC

103.08

PT - 2448 PT 2448  
PT 2448 1745

PT 2448  
2045

~~1149.37~~

~~1149.37~~

PT 2448  
PT 2448

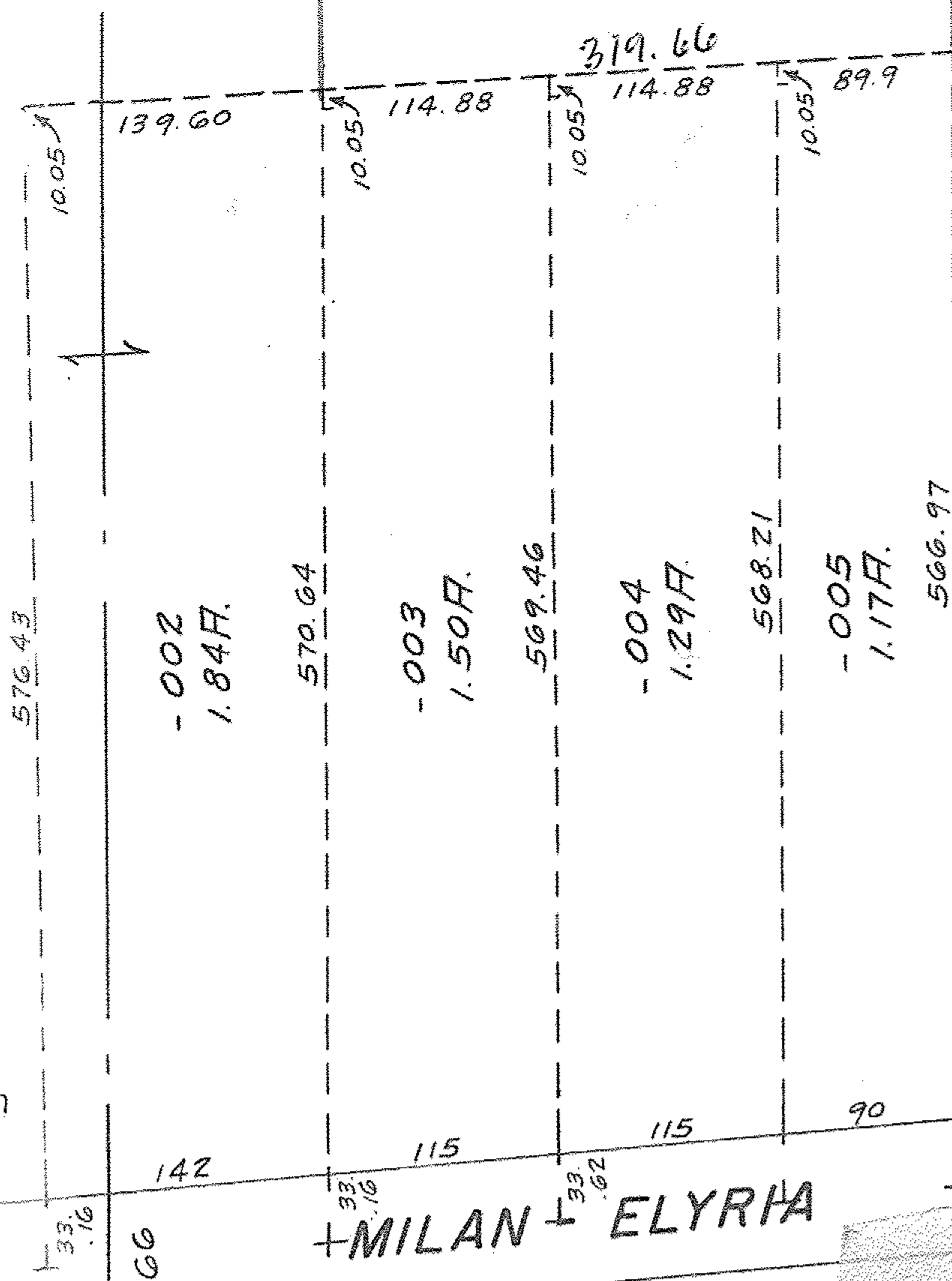
- 050  
8.99 AC

10826

APPROVED	
LORAIN CO.	
MAP DEPT.	
DATE	8/16/77
PAGE	5-00-053A
BY	LWH
VOID AFTER	

AUG 26 1977

SEE 3-00-040-D



MILAN ELYRIA

113

274.56