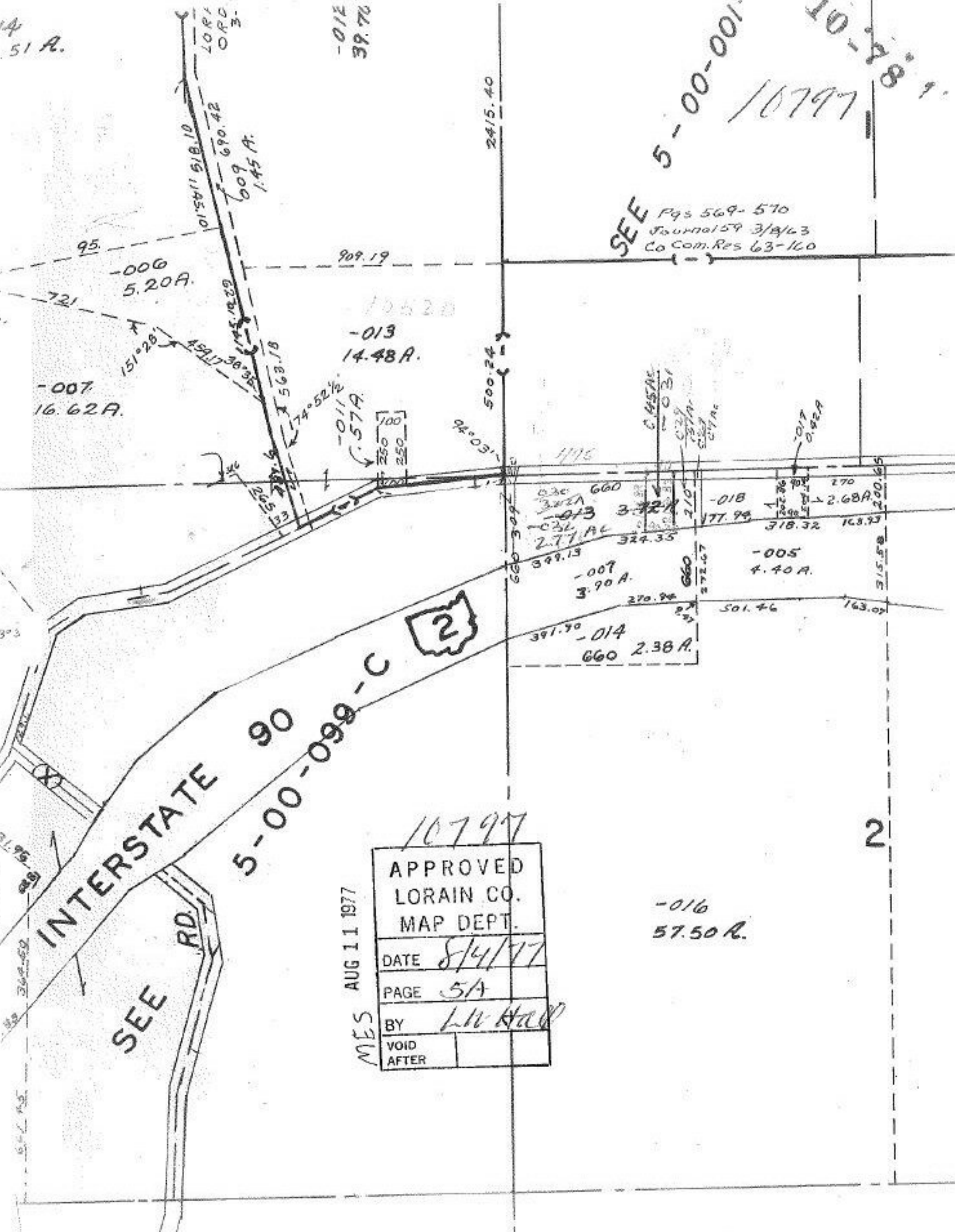


14
51 A.

-012
39.70

SEE 5-00-001.
10797
10-18-77
Pgs 569-570
Journal 59 3/8/63
Co Com. Res 63-160



INTERSTATE 90
5-00-099-C

SEE RD.

MES
AUG 11 1977

10797

APPROVED
LORAIN CO.
MAP DEPT.
DATE 8/4/77
PAGE 5A
BY L. W. HALL
VOID AFTER

-016
57.50 A.