

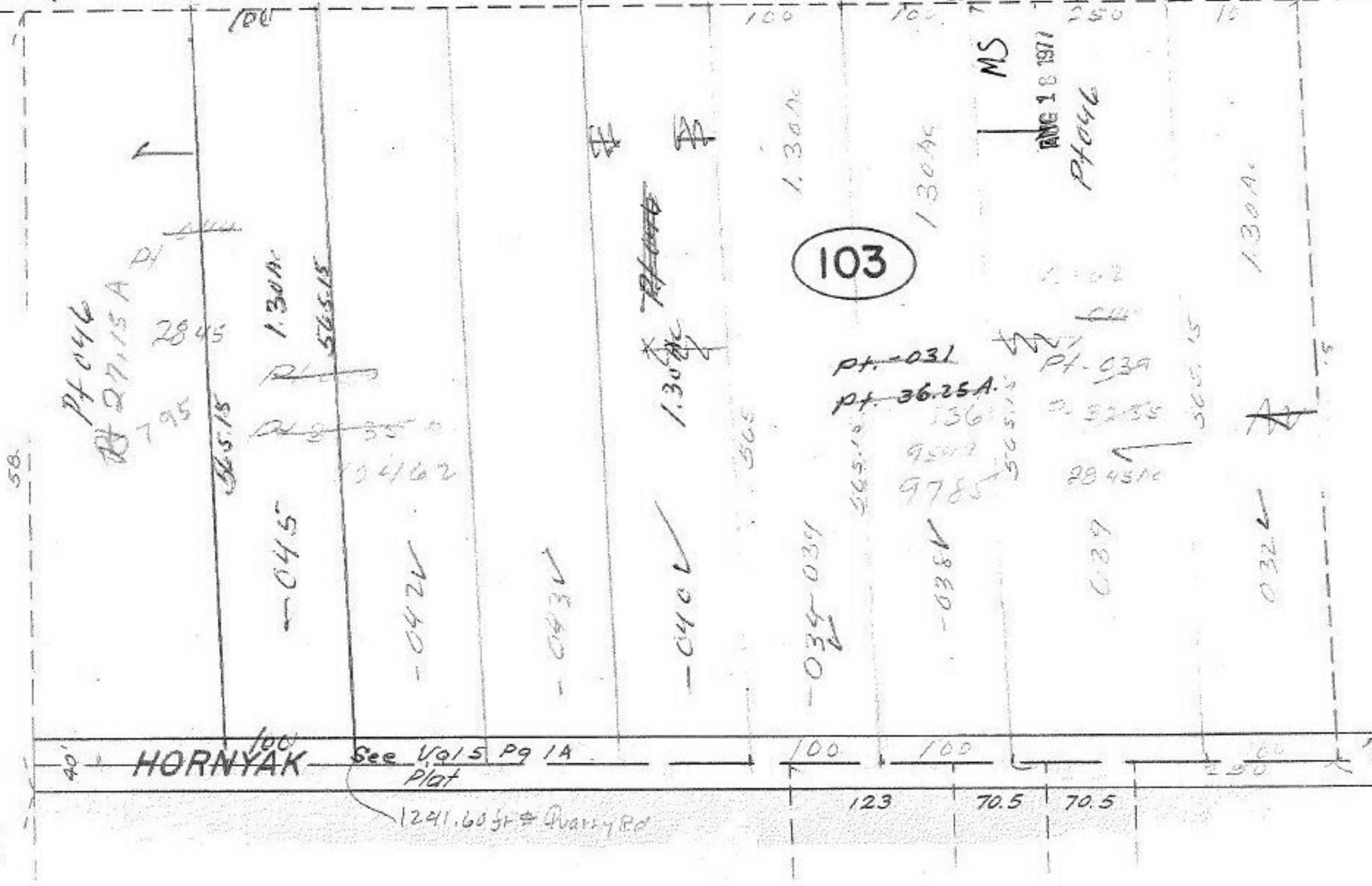
10795  
128

AUG 17 1977

APPROVED LORAIN CO. MAP DEPT.	
DATE: 8/17/77	10795
PAGE: 5-00-094B	
BY: H. W. H. H.	
VOID AFTER:	

335.6

1014  
27A  
8



103

HORNIAK

See Vol 15 Pg 1A Plat

1241.60 ft ± Quarry Rd

MS

AUG 18 1977

Pt 046

Pt. 031

Pt. 36.25A

Pt. 039

565.15  
9785  
565.15

565.15

284510

0.39

565.15

0.32L

1.30Ac

1.30Ac

1.30Ac

1.30Ac

565.15

565.15

2845

Pt

Pt 27.15 A

7.95

58

40'

100

100

123

70.5

70.5

100

100