

10790

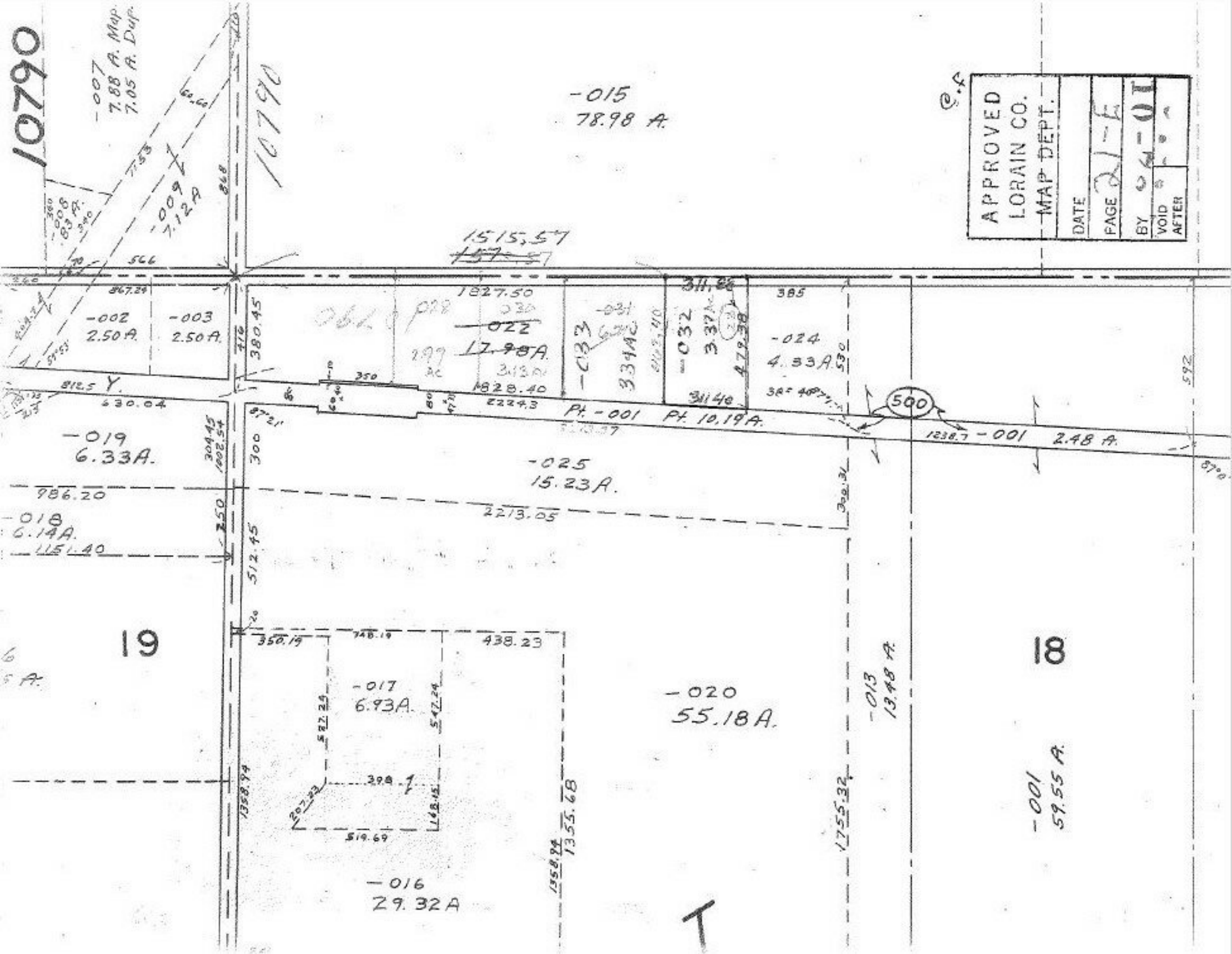
-007  
7.88 A. Map.  
7.05 A. Dup.

10790

-015  
78.98 A.

e.f.

APPROVED	
LORAIN CO.	
MAP DEPT.	
DATE	
PAGE	21-E
BY	6-01
VOID AFTER	



1515.57  
~~157.57~~

064 p28

-022  
17.98A

-033  
33.49A

-032  
3.37A

-024  
4.33A

-019  
6.33A

-025  
15.23A

500

018  
6.14A

-017  
6.93A

-020  
55.18A

-013  
13.48 A.

19

18

-016  
29.32A

-001  
59.55 A.

T