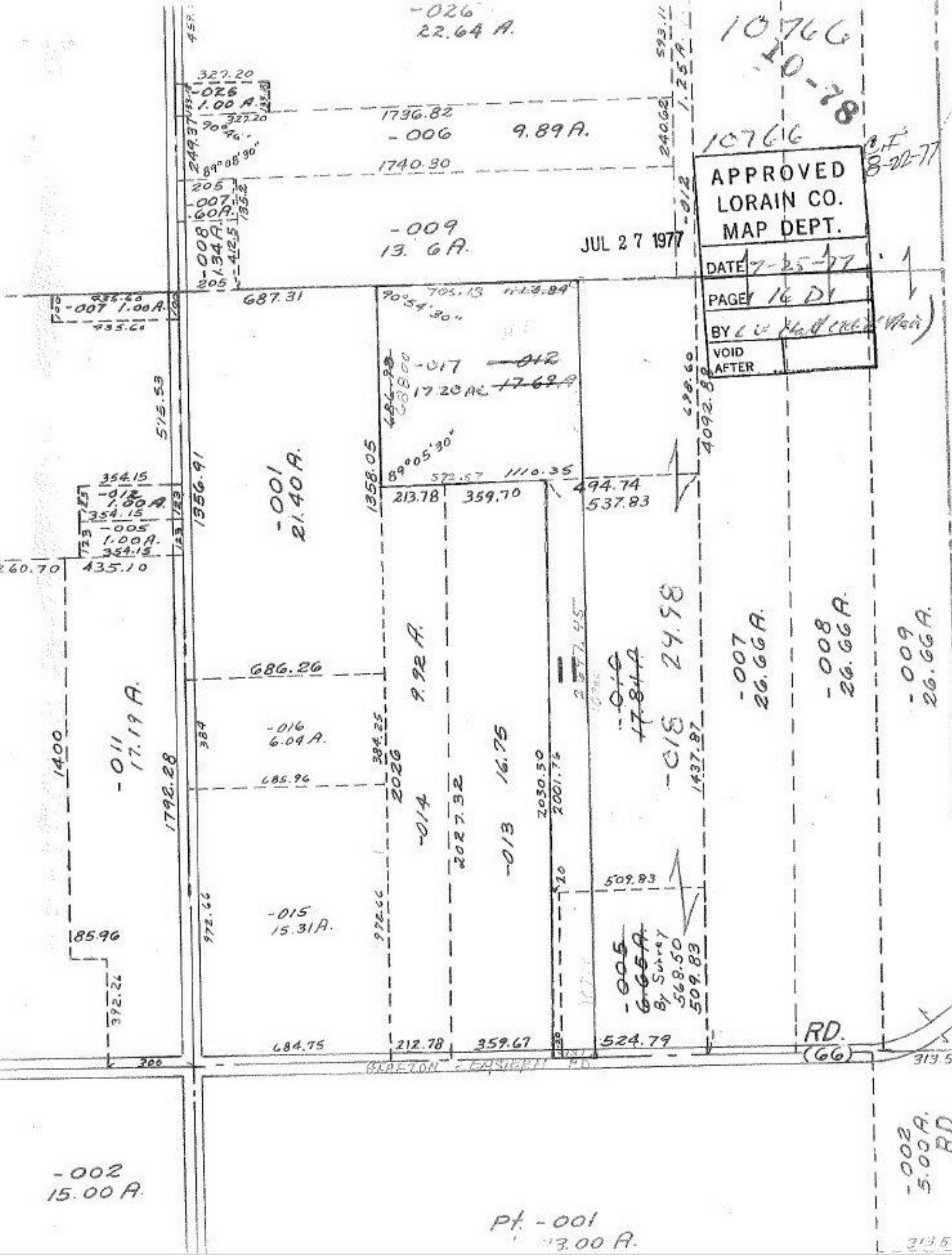


-026
22.64 A.

10766
10-28

APPROVED
LORAIN CO.
MAP DEPT.
DATE 7-25-77
PAGE 16 D1
BY L. W. Hall (C.R. Weir)
VOID AFTER

JUL 27 1977



-002
15.00 A.

Pt. -001
13.00 A.

-002
5.00 A.
RD.

313.5