

5-00-068-B

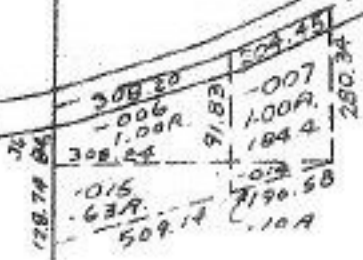
10762
10-14-81

-001
23.18A

-017
22.16A



-009
52A



-013
45.88 A

RD. 73

-010
16.00A

2005.08

-0
56

10762
APPROVED
LORAIN CO.
MAP DEPT.

AUG 15 1977

DATE 8/3/77

PAGE 5A

BY L.W. Hall

-0
23.00

VOID
AFTER

970.86

303.46