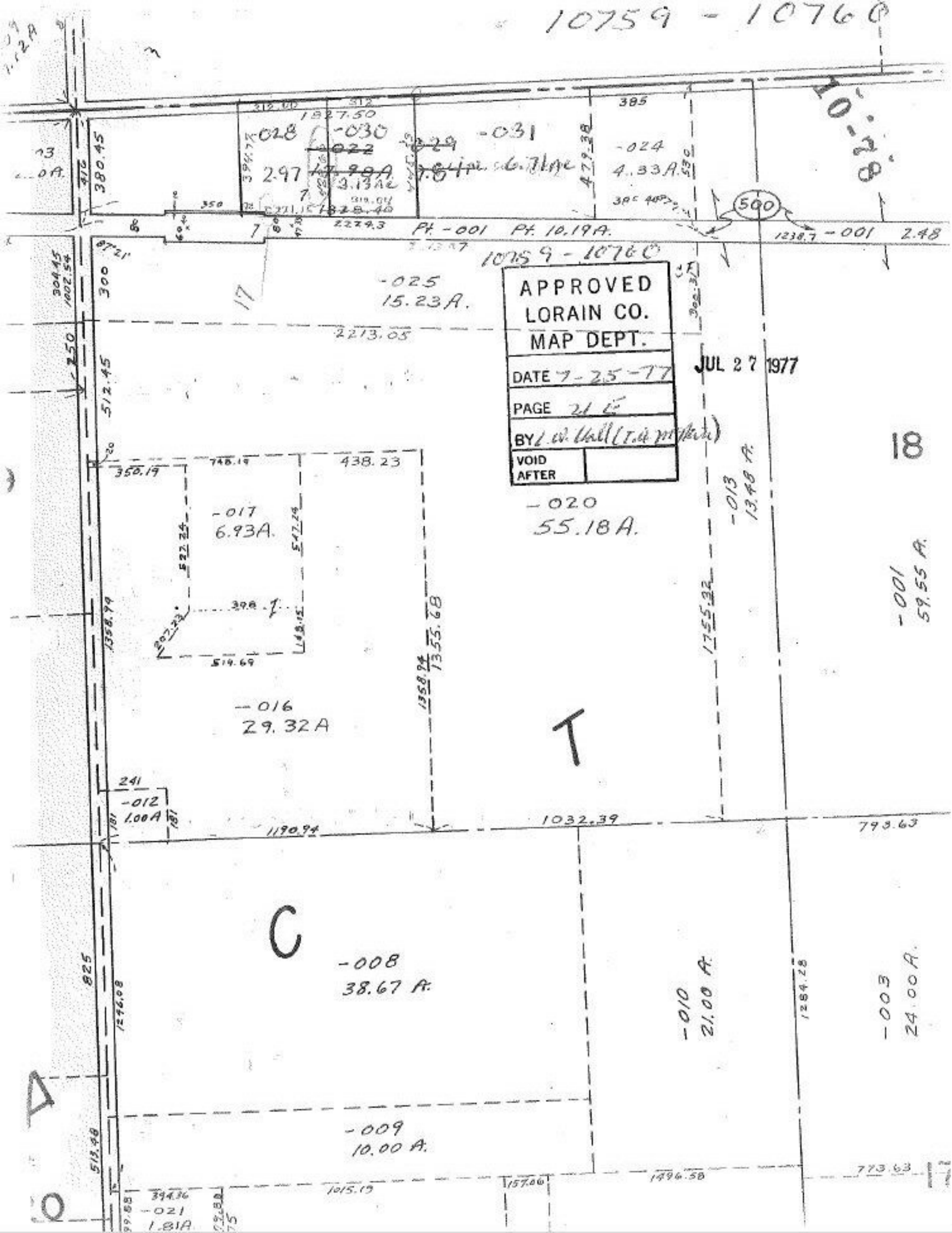


10759 - 10760



APPROVED  
LORAIN CO.  
MAP DEPT.

DATE 7-25-77

PAGE 21 E

BY L. W. Hall (T. & M. Hall)

VOID AFTER

JUL 27 1977

-020  
55.18 A.

-025  
15.23 A.

-017  
6.93 A.

-016  
29.32 A

-012  
1.00 A

-008  
38.67 A.

-009  
10.00 A.

-010  
21.00 A.

-003  
24.00 A.

-001  
59.55 A.

18

500

A

C

T

82.0

10759 - 10760

Pt. -001 Pt. 10.19A.

1238.7 -001 2.48

2213.05

1015.17

157.00

1496.50

773.63

1284.28

1755.32

1358.94  
1355.68

1398.99

512.45

300

380.45

479.38

385

-024

4.33 A.

385 407.77

512 1827.50

028

-030

029 -031

2.97

17.90 A

3.13 A

318.04

2271.57 1328.40

2279.3

13  
0A

304.45  
1002.54

250

17

207.22

522.25

358.19

748.19

438.23

514.69

398.7

148.15

547.28

241

-012  
1.00 A

1190.94

1032.39

793.63

825

1296.08

513.98

394.36

-021  
1.81 A

129.88

75