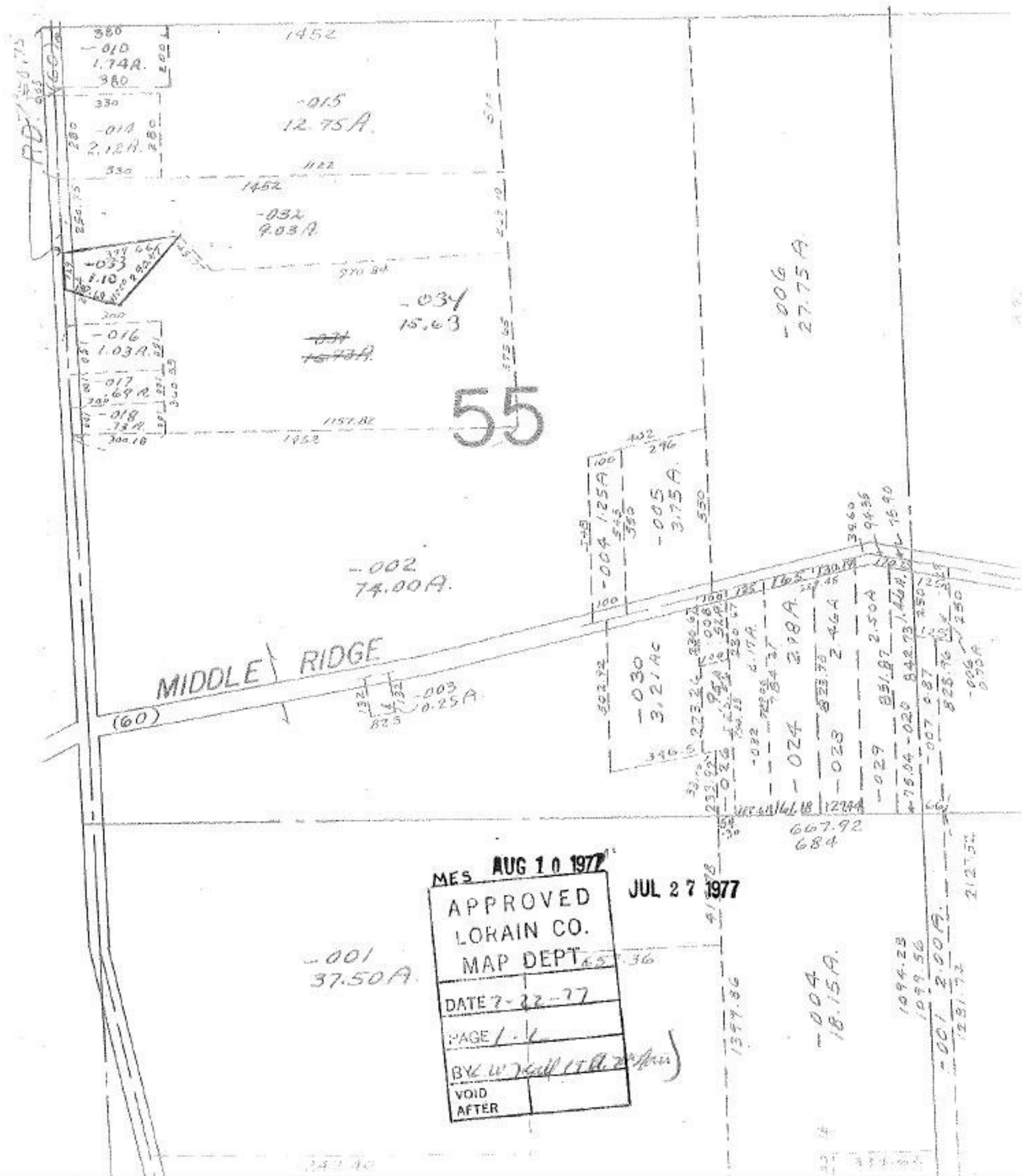


10746 10-78



MES AUG 10 1977  
 APPROVED  
 LORAIN CO.  
 MAP DEPT  
 DATE 7-22-77  
 PAGE 1-1  
 BY W. J. Hill (19th Apr)  
 VOID AFTER

JUL 27 1977

-001  
37.50A

-004  
18.15A

-001  
2.00A

MIDDLE RIDGE

55

-006  
27.75A

-002  
74.00A

-015  
12.75A

-034  
15.63

-032  
9.03A

-030  
3.21AC

-024  
2.98A

-023  
2.46A

-029  
2.50A

-004  
1.25A

-005  
3.75A

-006  
0.90A

RD. 60

(60)