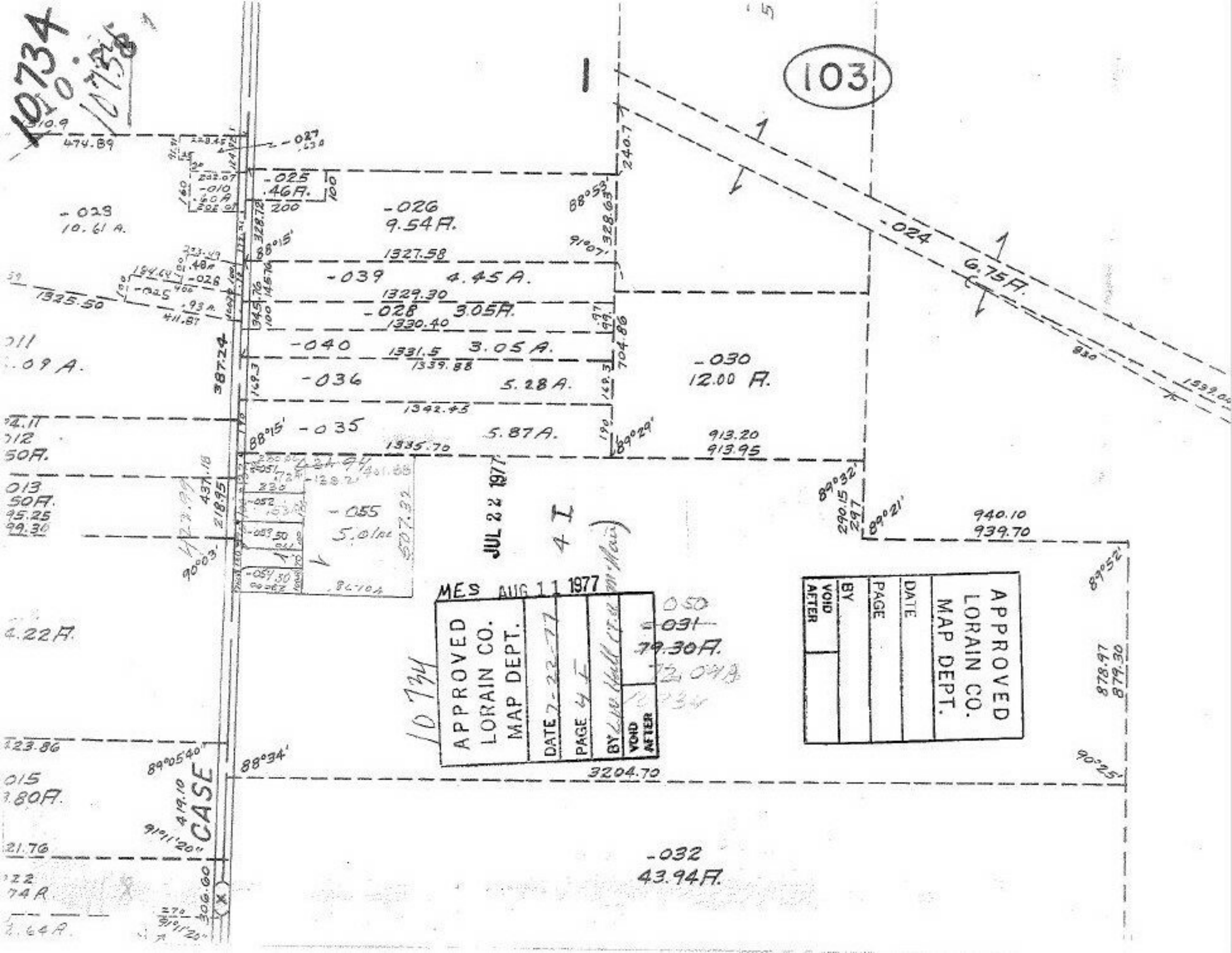


10734
10734
10734

103



-029
10.61 A.

-025
46 F.

-026
9.54 F.

-039
4.45 A.

-028
3.05 F.

-040
3.05 A.

-036
5.28 A.

-035
5.87 A.

-055
5.01 A.

-030
12.00 F.

940.10
939.70

JUL 22 1977

4 I

MES AUG 11 1977

APPROVED
LORAIN CO.
MAP DEPT.
DATE 7-22-77
PAGE 4 F
BY L. W. Hall (T. R. M. Hall)
VOID AFTER

APPROVED
LORAIN CO.
MAP DEPT.
DATE
PAGE
BY
VOID AFTER

CASE

419.10
919'20"

306.00
919'20"

-032
43.94 F.

878.97
879.30

878.97
879.30

10734
10734
10734

103

-029
10.61 A.

-025
46 F.

-026
9.54 F.

-039
4.45 A.

-028
3.05 F.

-040
3.05 A.

-036
5.28 A.

-035
5.87 A.

-055
5.01 A.

-030
12.00 F.

940.10
939.70

JUL 22 1977

4 I

MES AUG 11 1977

APPROVED
LORAIN CO.
MAP DEPT.
DATE 7-22-77
PAGE 4 F
BY L. W. Hall (T. R. M. Hall)
VOID AFTER

APPROVED
LORAIN CO.
MAP DEPT.
DATE
PAGE
BY
VOID AFTER

CASE

419.10
919'20"

306.00
919'20"

-032
43.94 F.

878.97
879.30

878.97
879.30

10734
10734
10734

103

-029
10.61 A.

-025
46 F.

-026
9.54 F.

-039
4.45 A.

-028
3.05 F.

-040
3.05 A.

-036
5.28 A.

-035
5.87 A.

-055
5.01 A.

-030
12.00 F.

940.10
939.70

JUL 22 1977

4 I

MES AUG 11 1977

APPROVED
LORAIN CO.
MAP DEPT.
DATE 7-22-77
PAGE 4 F
BY L. W. Hall (T. R. M. Hall)
VOID AFTER

APPROVED
LORAIN CO.
MAP DEPT.
DATE
PAGE
BY
VOID AFTER

CASE

419.10
919'20"

306.00
919'20"

-032
43.94 F.

878.97
879.30

878.97
879.30