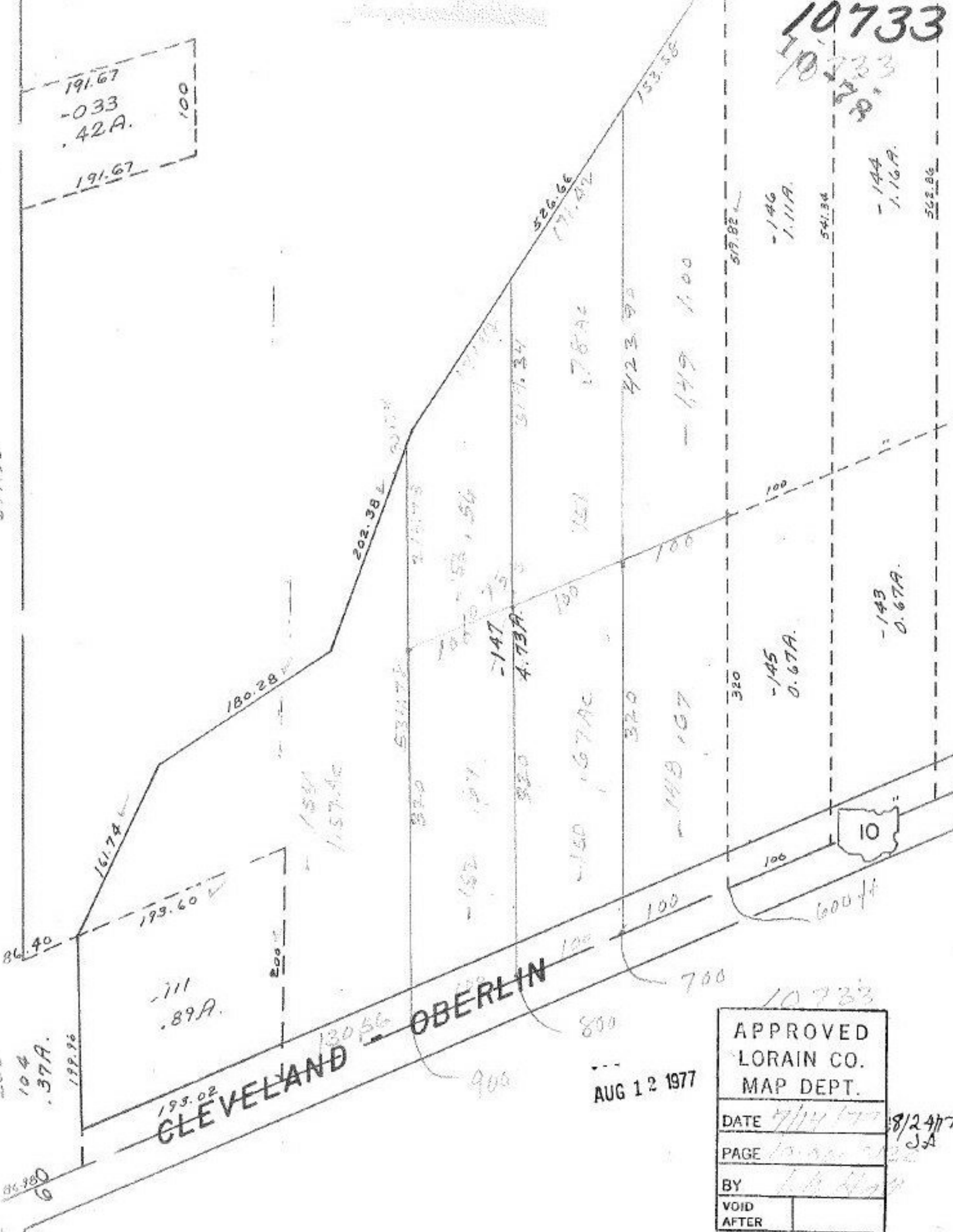


10733

191.67
-033
.42A.
191.67
100



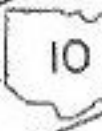
APPROVED LORAIN CO. MAP DEPT.	
DATE	7/14/77 8/24/77
PAGE	10 of 22
BY	[Signature]
VOID AFTER	

AUG 12 1977

104
.37A.
199.96
86.980
6

193.02
CLEVELAND

OBERLIN



10733

-144
1.16A.

-146
1.11A.

-145
0.67A.

-143
0.67A.

526.66
177.02

123
1.78AC

150
1.67AC

-147
4.73A.

202.38

180.28

161.74

193.60

-111
.89A.

153
1.57AC

531.77

32.0

150

32.0

32.0

148

320

100

100

100

423.92

-149
1.00

519.82

541.84

522.86

153.58