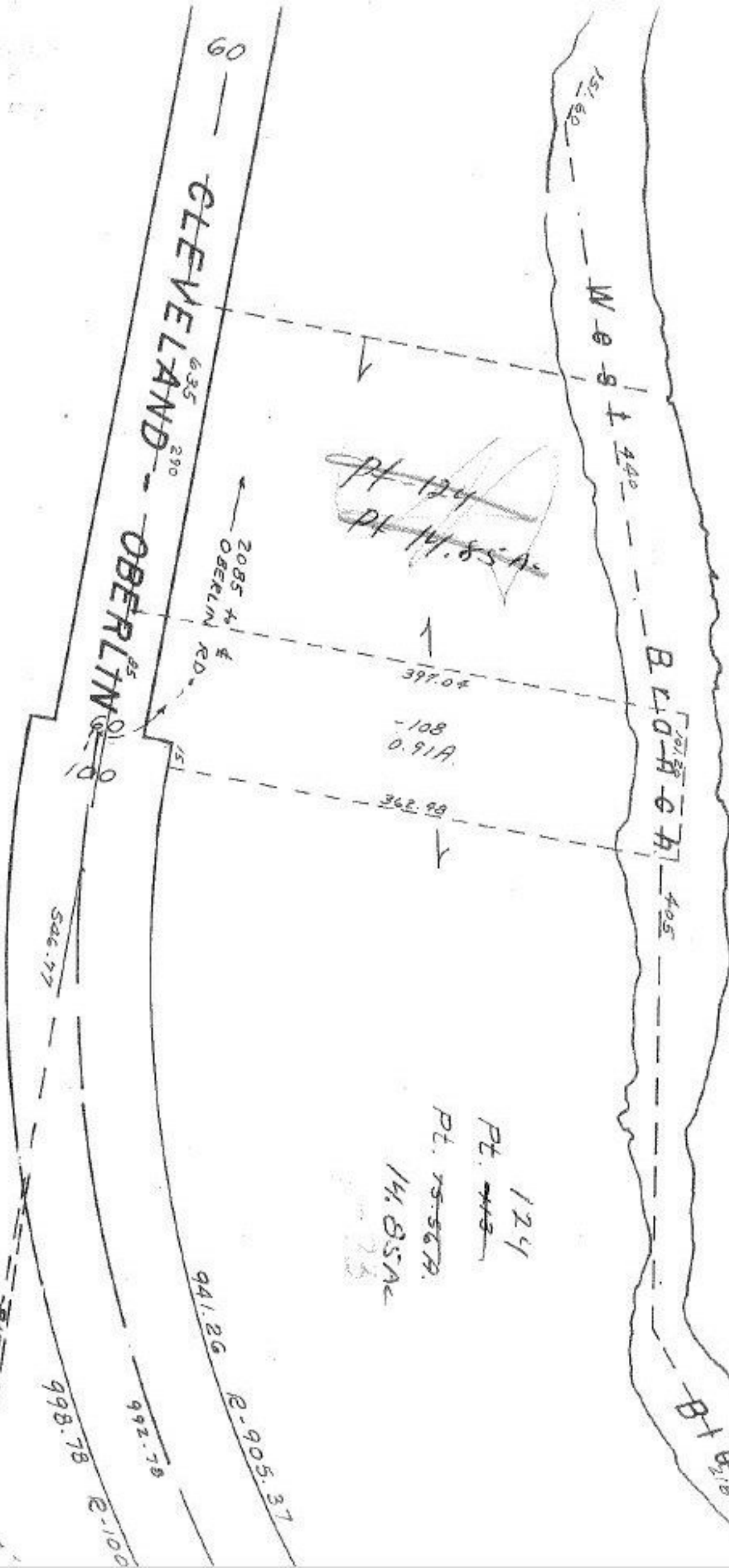


10731

10-012-B



~~Pt. 124~~  
~~Pt. 14.85A~~

-108  
 0.91A

Pt. 124  
 Pt. 14.85A

JUL 22 1977

10731

APPROVED LORAIN CO. MAP DEPT.	
DATE 7/13/77	8/12/77
PAGE 10-01-C/2B & C	
BY Julie Allgood	
VOID AFTER	

SEE 10-01-012-G  
 SEE 10-01-012-G