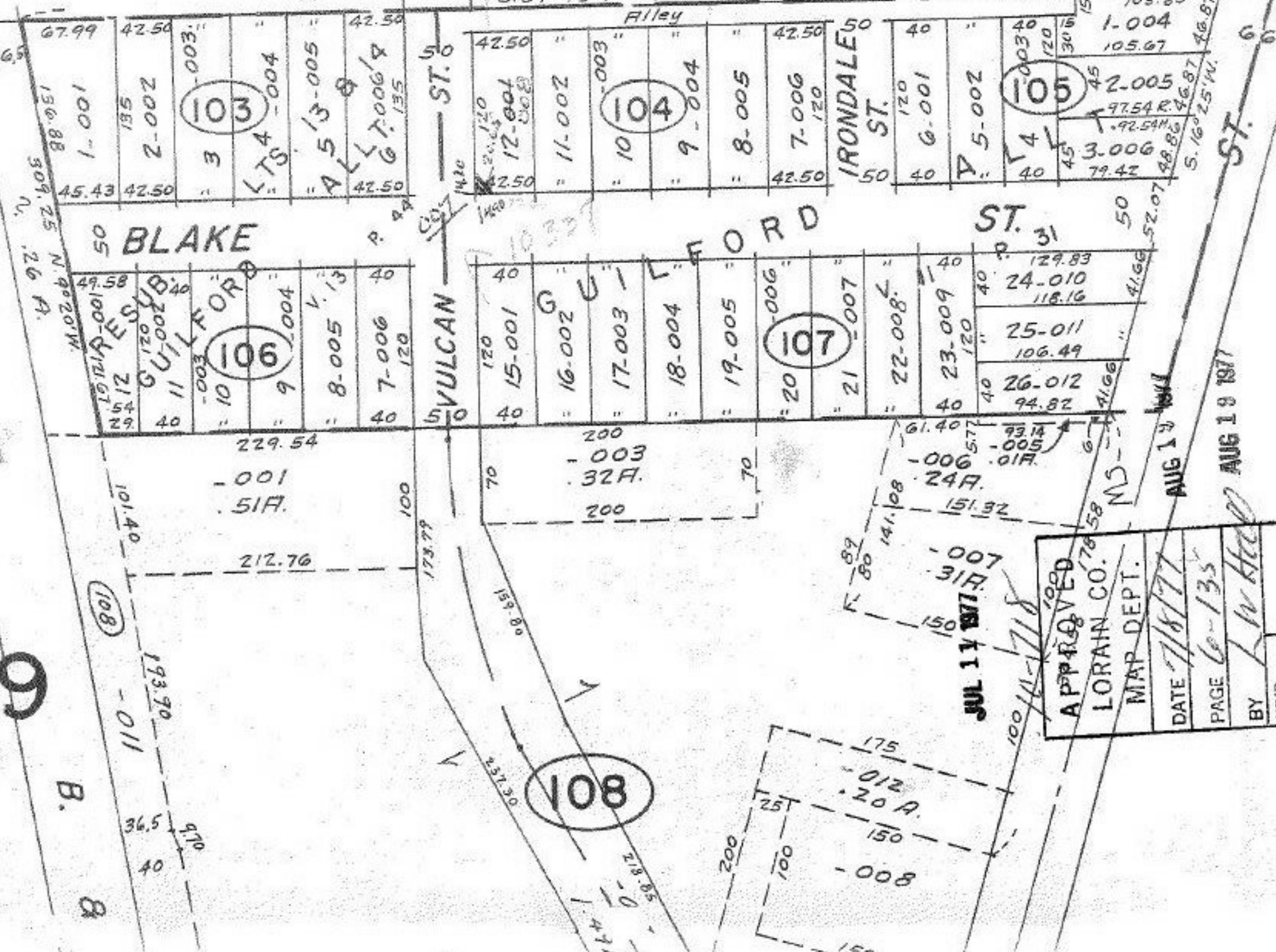


SEE 6-117

S. 89° 48' 30" E. 874.29

10718
60
66
28



APPROVED
 JUL 17 1917
 LORAIN CO. MAP DEPT.
 DATE 7/18/17
 PAGE 6-135
 BY L. W. HALL
 VOID AFTER

AUG 13 1917
 AUG 18 1917

APPROVED
 LORAIN CO. MAP DEPT.
 DATE 7/18/17
 PAGE 6-135
 BY L. W. HALL
 VOID AFTER