

103

APPROVED	
LORAIN CO.	
MAP DEPT.	
DATE	7/8/77
PAGE	47
BY	LW Heep
VOID	
AFTER	

MAR 13 1977

10713

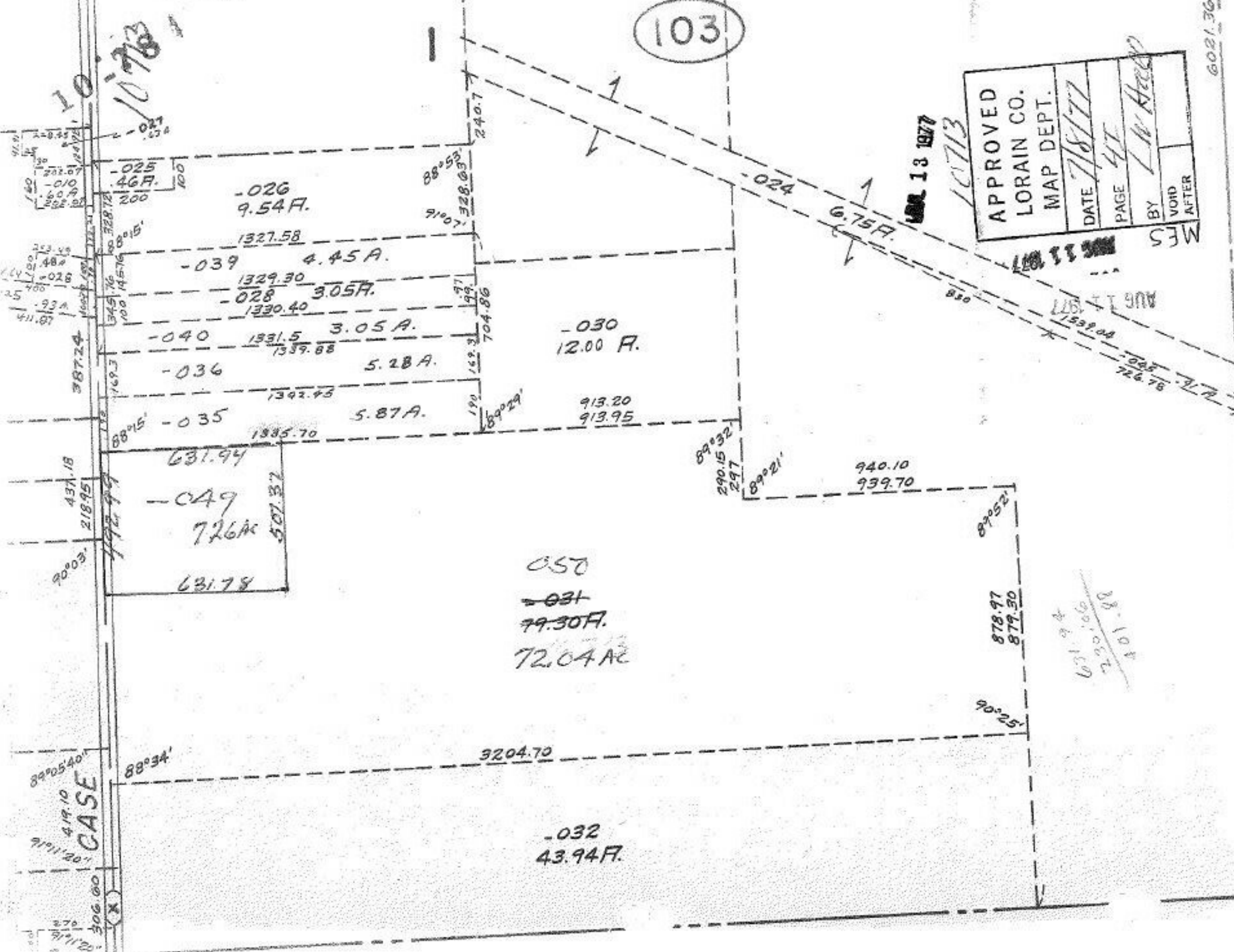
MJS

AUG 13 1977

AUG 13 1977

AUG 13 1977

631.94
 200.00
 200.00
 200.00
 200.00



6021.36

CASE

211.20
306.00
419.10
89°05'40"