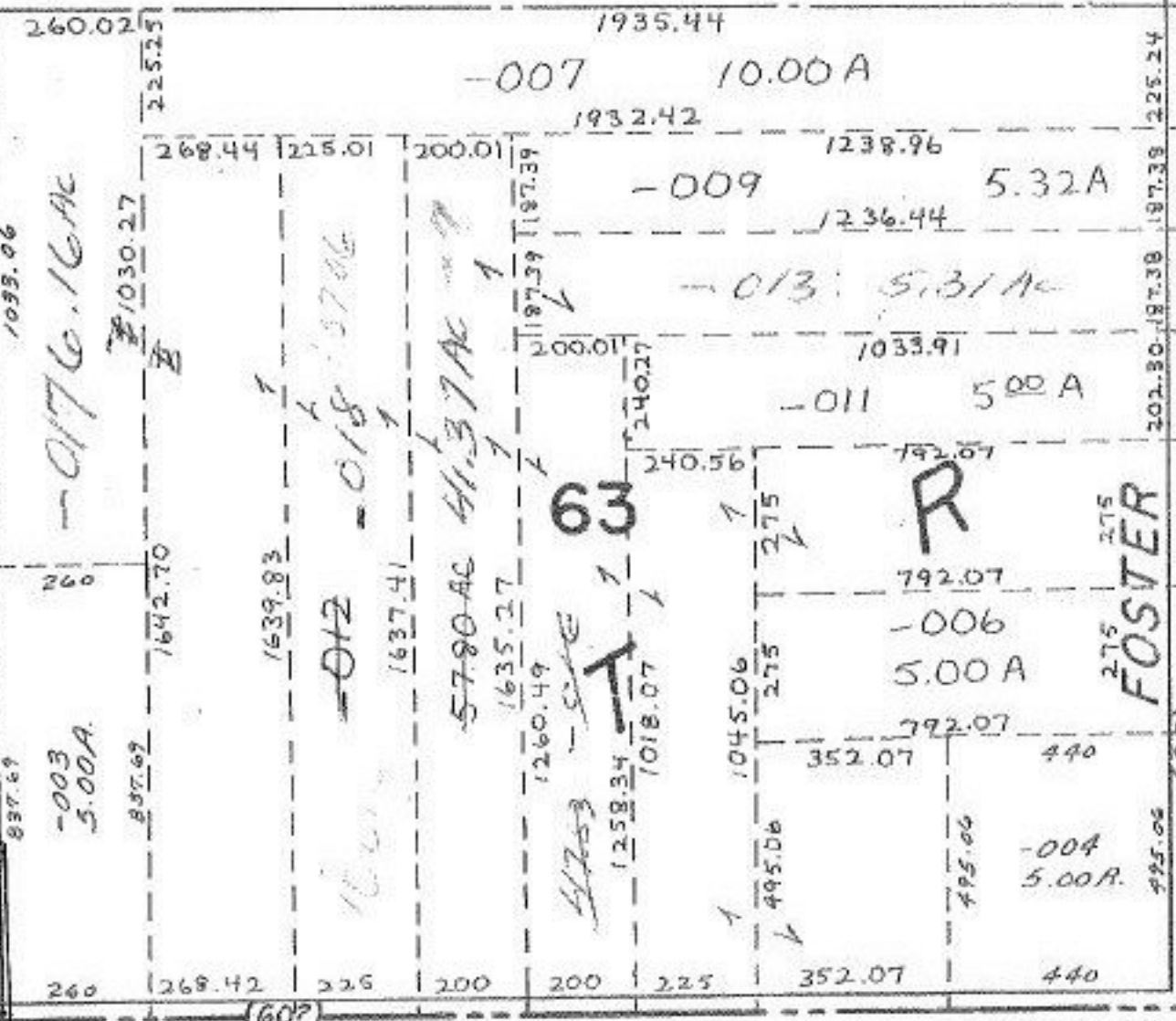


435
729
-002
28A
1078
765.12
79.25

-003
88.92 A.

62

172.90
1204.10
183.41
178.35
-004
2.79 A.
346.42
432.25



A
OCT
①

C.F. JUL 11 1977
8-17-77
10706

APPROVED
LORAIN CO.
MAP DEPT.

DATE 7/7/77
AGE 19A
BY LV Add
VOID AFTER

SMITH
PENFIELD TWP.

SCALE: 1" = 400'