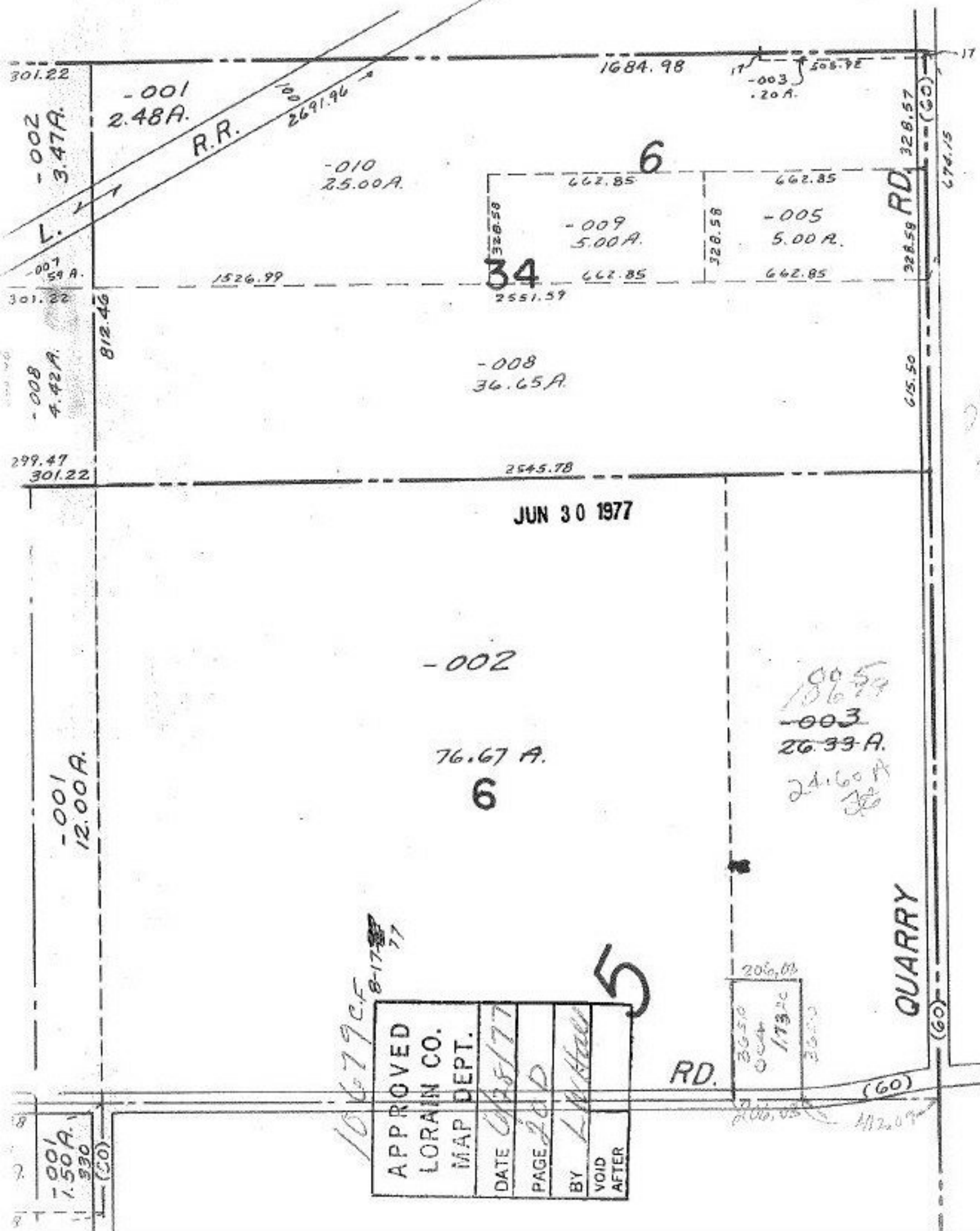


10679

1182701



20 130
 24 060 A

005
 10679
 -003
 26.33 A.
 24.60 A
 38

10679 c.f. 8-17-77

APPROVED	
LORAIN CO.	
MAP DEPT.	
DATE	6/25/77
PAGE	2 of 2
BY	L. W. Hall
VOID AFTER	

5

6

34

JUN 30 1977

QUARRY

RD.

(60)

(60)

812.46

-002
3.47A.

-001
2.48A.

-010
25.00A.

-009
5.00A.

-005
5.00A.

-008
36.65A.

-002

76.67 A.

6

-001
12.00A.

-008
4.42A.

301.22

301.22

299.47
301.22

1684.98

508.7E
-003
.20A.

1526.99

2551.59

2545.78

RD. 328.57

674.15

615.50

206.00

3650
004
17320

3650

206.00

412.09