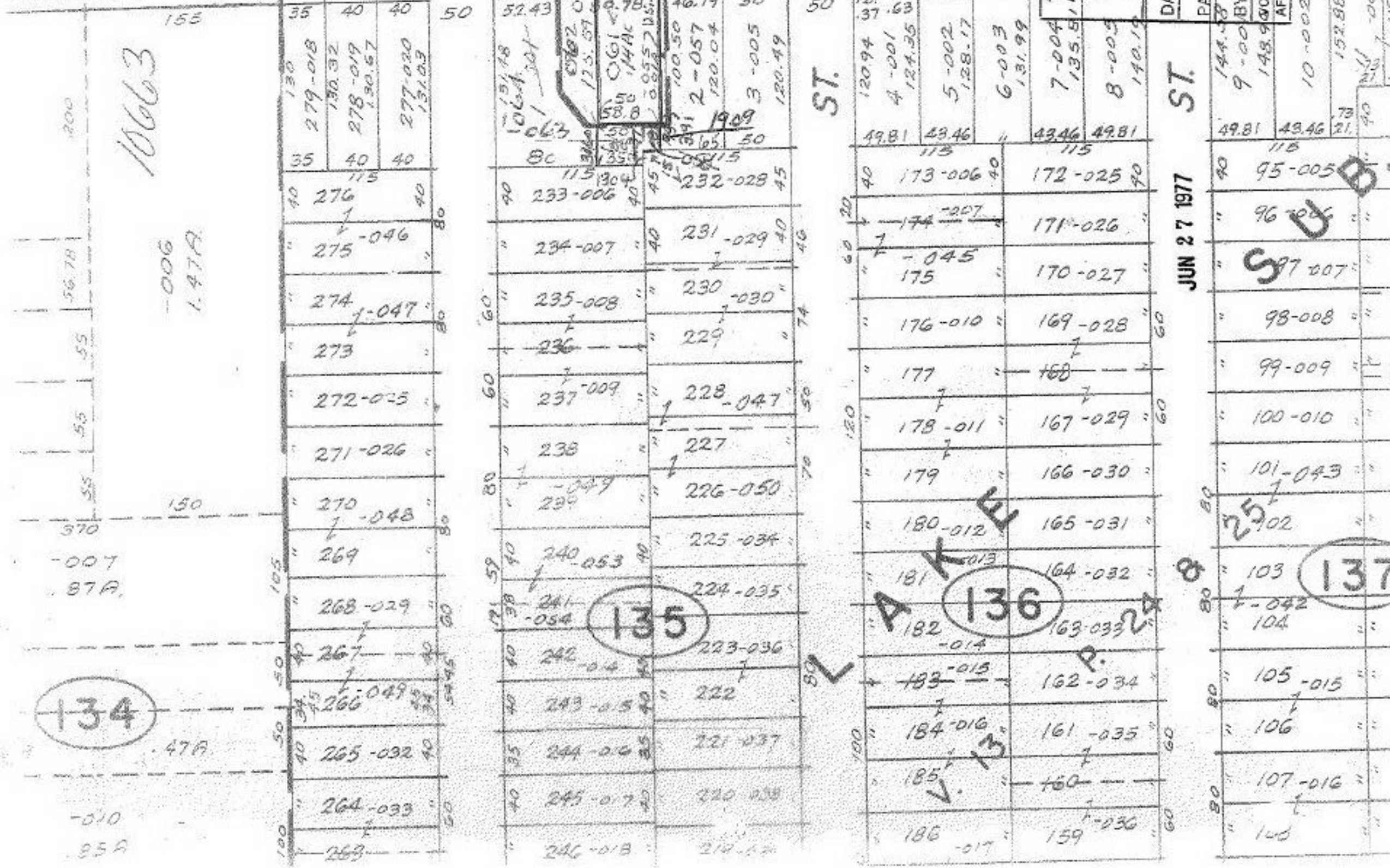


ELAND SANDUSKY

APPROVED
LORAIN CO.
MAP DEPT.
DATE 6/23/77
PAGE 4002/50
BY L.W. Hall
VOID AFTER 10-002



134

135

136

137

JUN 27 1977

SUB

A K E

L

V 13

10663

-006
1.47A

-007
87A

-010
85A

1062 ST
123.57
1061 ST
144 AC
1909
1060 ST
123.57
1059 ST
100.50
1058 ST
2-057
120.04
1057 ST
3-005
120.49

612

ST.

ST.

B

S

U

7

25

1

1

1

1