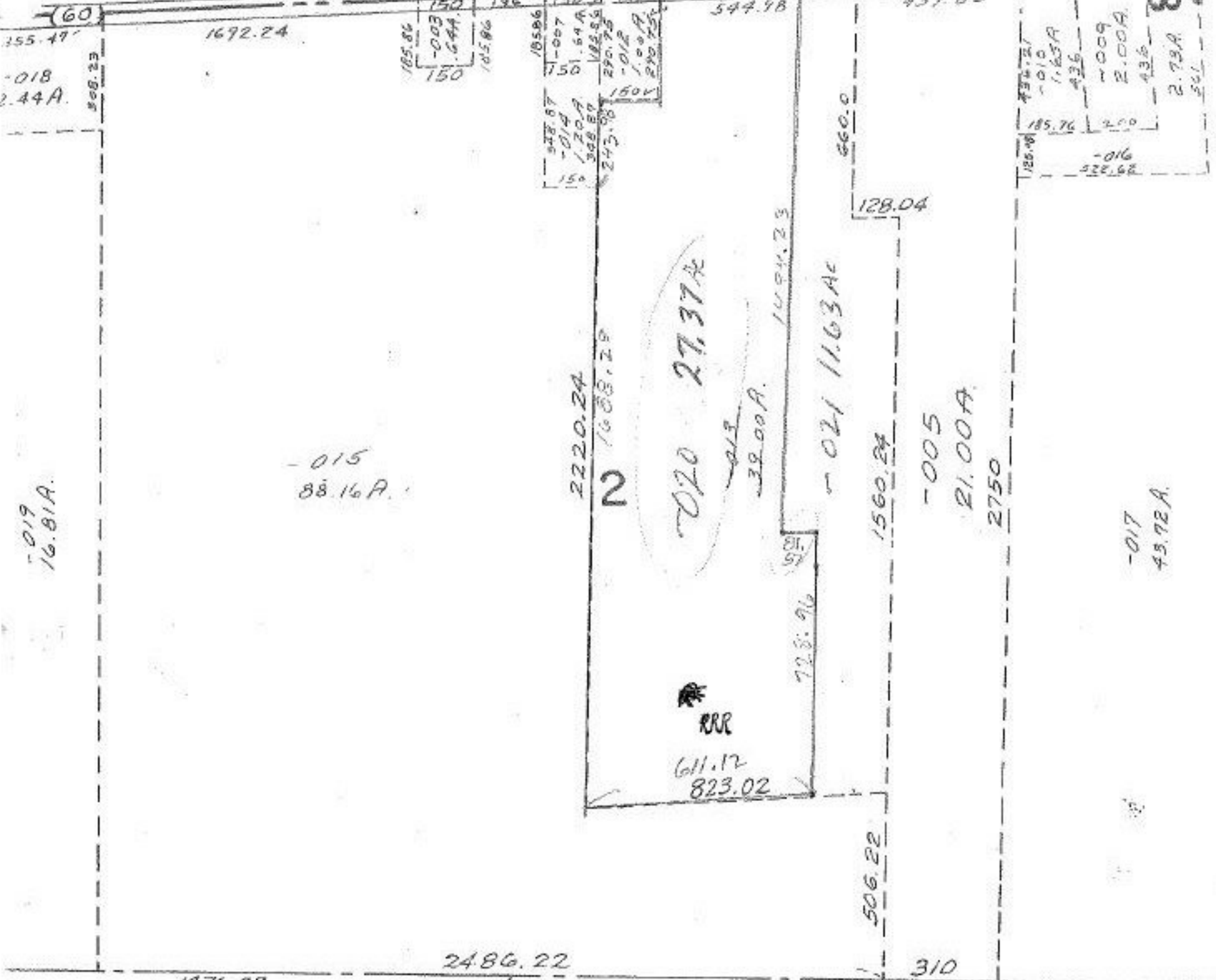


10637

PECK

WADSWORTH

1494.7



-019
16.81A.

-015
88.16A.

2220.24

N

020 27.37A

-013
3.00A.

-021 11.63A

-005
21.00A

2750

-017
48.92A.

437.83
494.77
-007
5.54A
10.50
497.2
2.00
128.04
185.76
-010
1.65A
436
-009
2.00A
436
2.73A
501

10637

APPROVED
LORAIN CO.
MAP DEPT.
DATE 6/16/77
PAGE 172
BY [Signature]
VOID AFTER

JUN 17 1977

500

W

-001 L. 5.65 A. E.

T

8/15/77
RRR.

-015