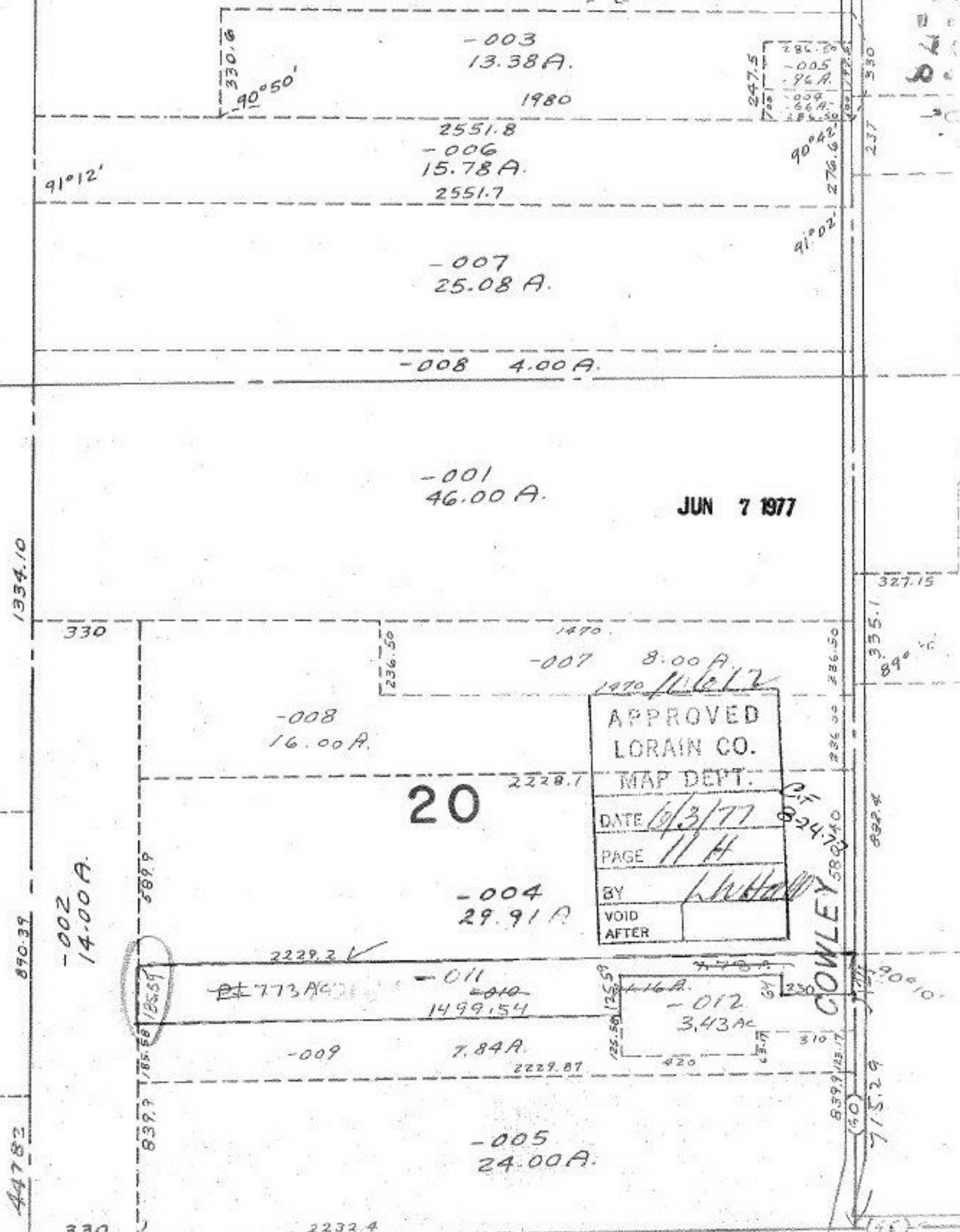


19

10612
10612



-003
13.38 A.

1980

2551.8
-006
15.78 A.

-007
25.08 A.

-008 4.00 A.

-001
46.00 A.

JUN 7 1977

-008
16.00 A.

-007 8.00 A.

20

-004
29.91 A.

-011
1499.54

-009 7.84 A.

-005
24.00 A.

APPROVED
LORAIN CO.
MAP DEPT.
DATE 6/3/77
PAGE 11 H
BY L.W. HOWLEY
VOID AFTER

-012
3.43 AC

COWLEY

CLOCKER RD