

1060

1182-01

435
-003 1.50A
435
74.25
-002
.28A

57.80
51.31
52.49

-003
88.92 A.

#10610 62

APPROVED
LORAIN CO.
MAP DEPT.
DATE 6-3-77
PAGE 19-H
BY *J. D. ...*
VOID
AFTER

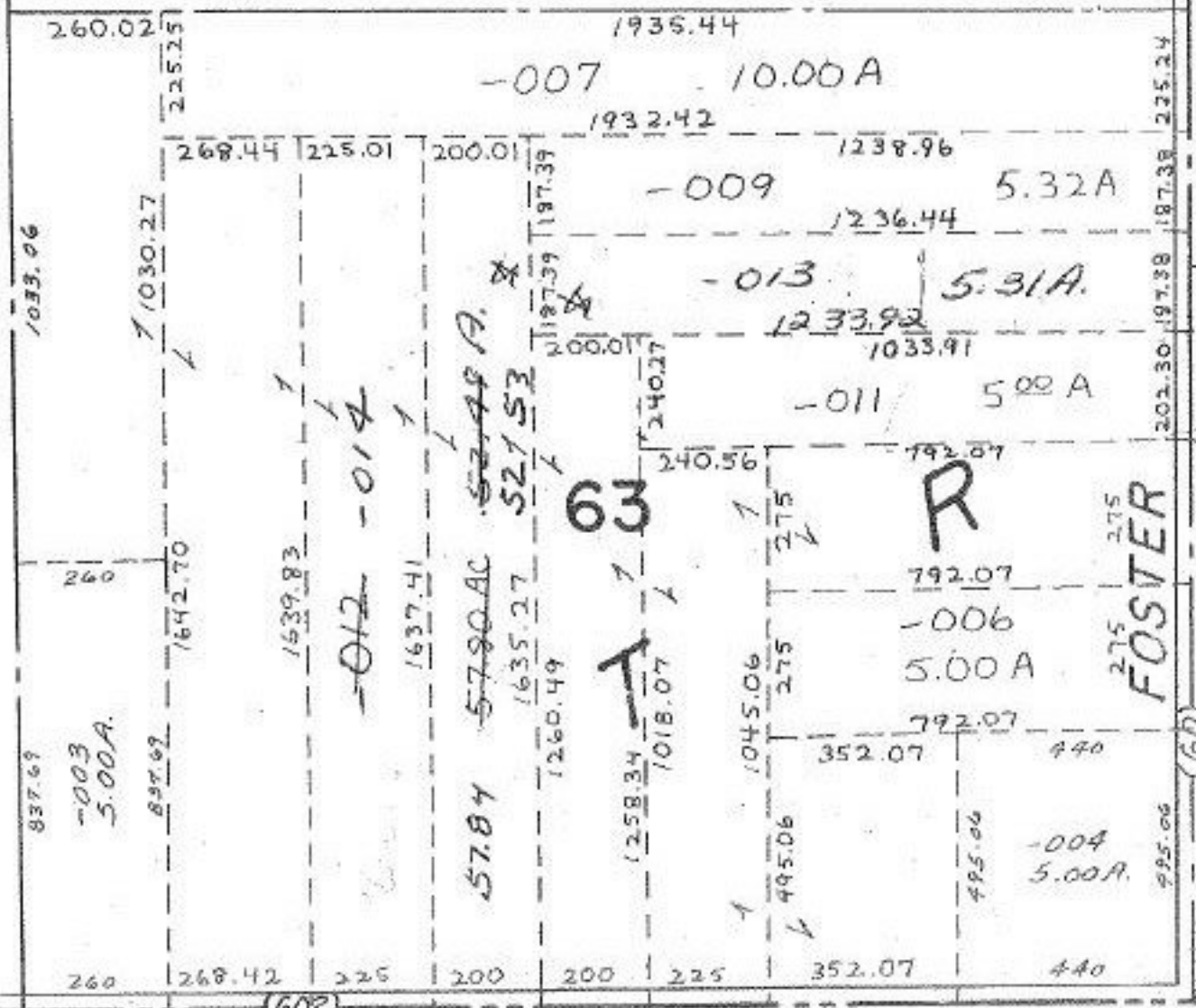
C.F.
8-17-77

57.84
- 5.31
52.53
LW.H

172.90
183.41
-004
2.79 A.
346.42

57.80
51.31
52.49

JUN 13 1977



SMITH

PENFIELD TWP