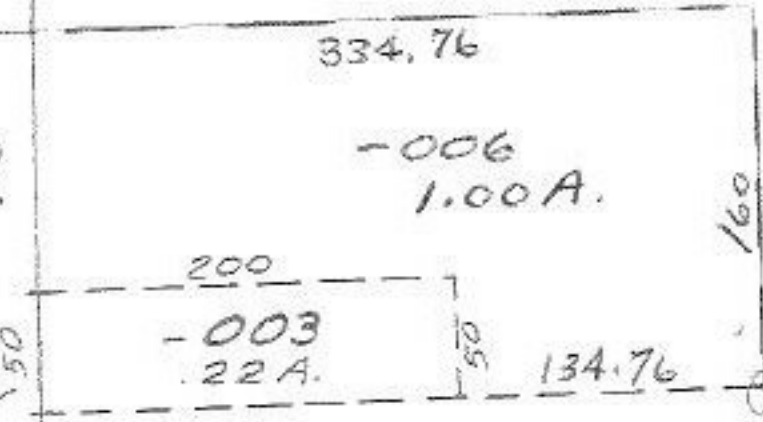


10-78
82-01

110 A. S. L. H. S.

WOOSTER
50



#10606

APPROVED LORAIN CO. MAP DEPT.	
DATE 6-3-77	
PAGE 4-00-0176	
BY <i>J. Collett</i>	
VOID AFTER	

AUG 11 1977
MES

JUN 27 1977

113

-007
~~-002~~
~~21.78A.~~
20.78A.

1320

-004
3.00A.

-005
3.00A.

1320