

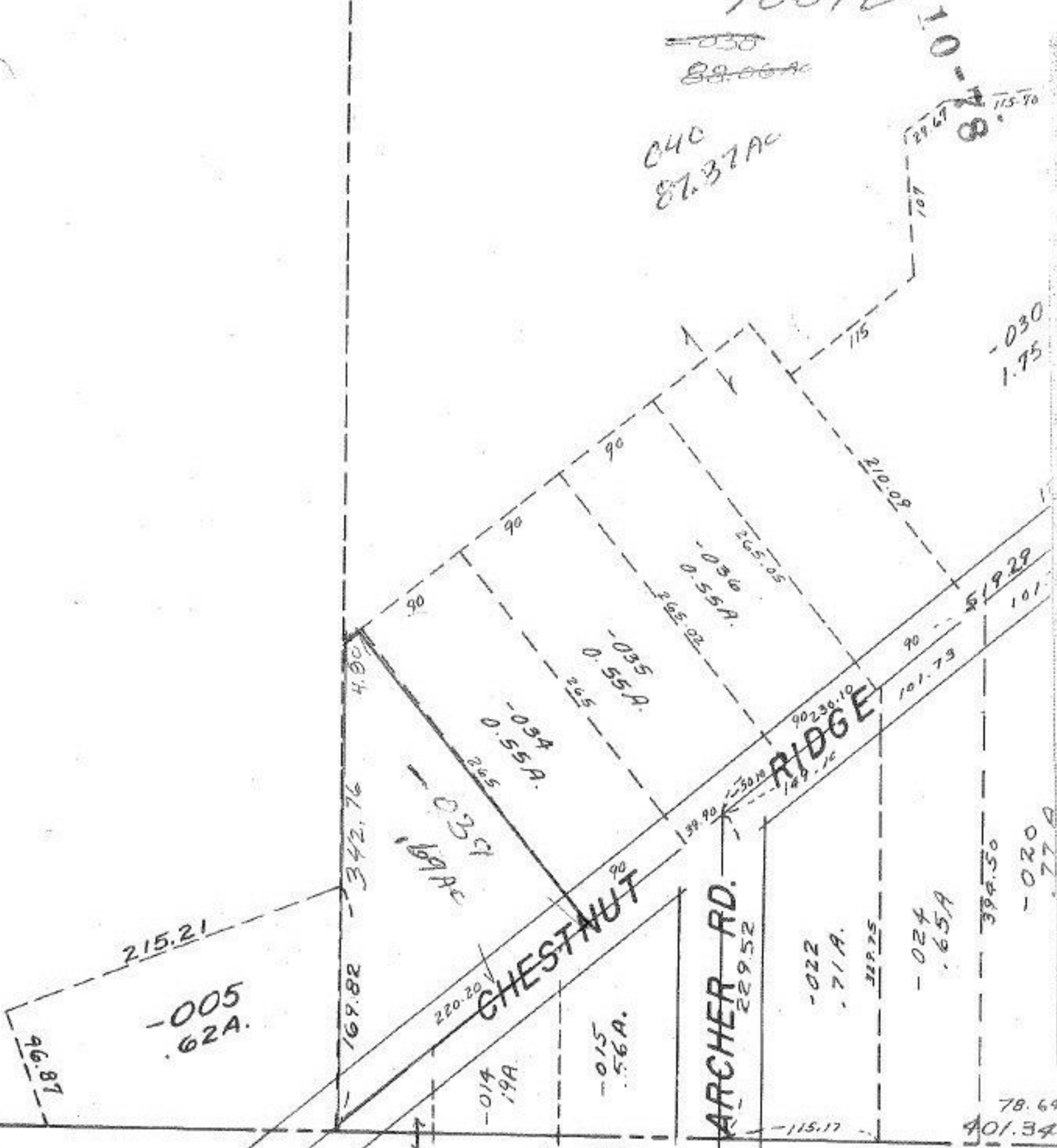
10572

038
89.06 AC

040
87.37 AC

10-01
87
115.90

-030
1.75



SEE 11-B

JUN 9 1977

10572

APPROVED LORAIN CO. MAP DEPT.	
DATE	5/26/77 8-11-77
FILE	7-00-036D
BY	L.P. Hall Jr.
VOID AFTER	

EVILLE

TWP

10'