

10571

1016.40

-001
49.00 A.

8

27

-003 - 00.6
73.52 A. 71.68 AC

RD.

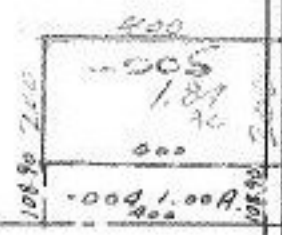
X

JUN 1 1977

10571

APPROVED	
LORAIN CO.	
MAP DEPT.	
DATE	5/26/77
PAGE	170
BY	LW Hall RBR
VOID AFTER	

8/15/77
RBR



10571

Peck Nailsworth Rd
600

03
28A