

909.48

-013
28.46 A.

909.

-007
17.50 t.

1342.44

237.41
-009
254.73
100

1582.37

-001
10.00 A. $\frac{4.53}{43.17}$
 $\frac{47.70}{16.13}$
1626.76
31.57 A

270.7

Aug 29, 77
98

#10558

APPROVED
LORAIN CO.
MAP DEPT.

-001
47.70 A.

DATE 5-24-77 8/25/77

PAGE 8-H J.A.

BY *[Signature]*

VOID
AFTER

-002
28.50 A.

3

760.16

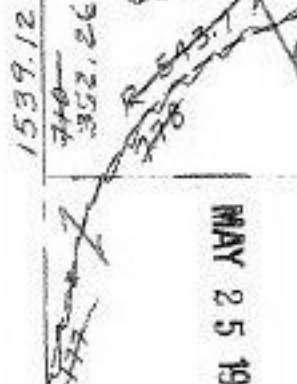
2005.50

002 9 $\frac{4.53}{14.45}$ 1473.50

-003
103 A.

-004 10 $\frac{16.22}{2.23 A.}$

60



-004
16.13 A.

2005.50

320

320

-006
0.30 A.

-005
34.94 A.

984.98

MAY 25 1977

-003
43.17 A.

-005
31.57 A.

684.60

175
175
500
684.60

1617

2005.50

T 1

2005.52

-006
36.14 A.

300

C

681.57

90.97

82-01
16-28
25-09