

- 003
49.50A.

10548
849.75
- 003
7.50A.
82-07-

- 005
40.00A.

LORAIN COUNTY
TAX MAP DEPARTMENT
P. P. NO. _____

MAY 19 1977

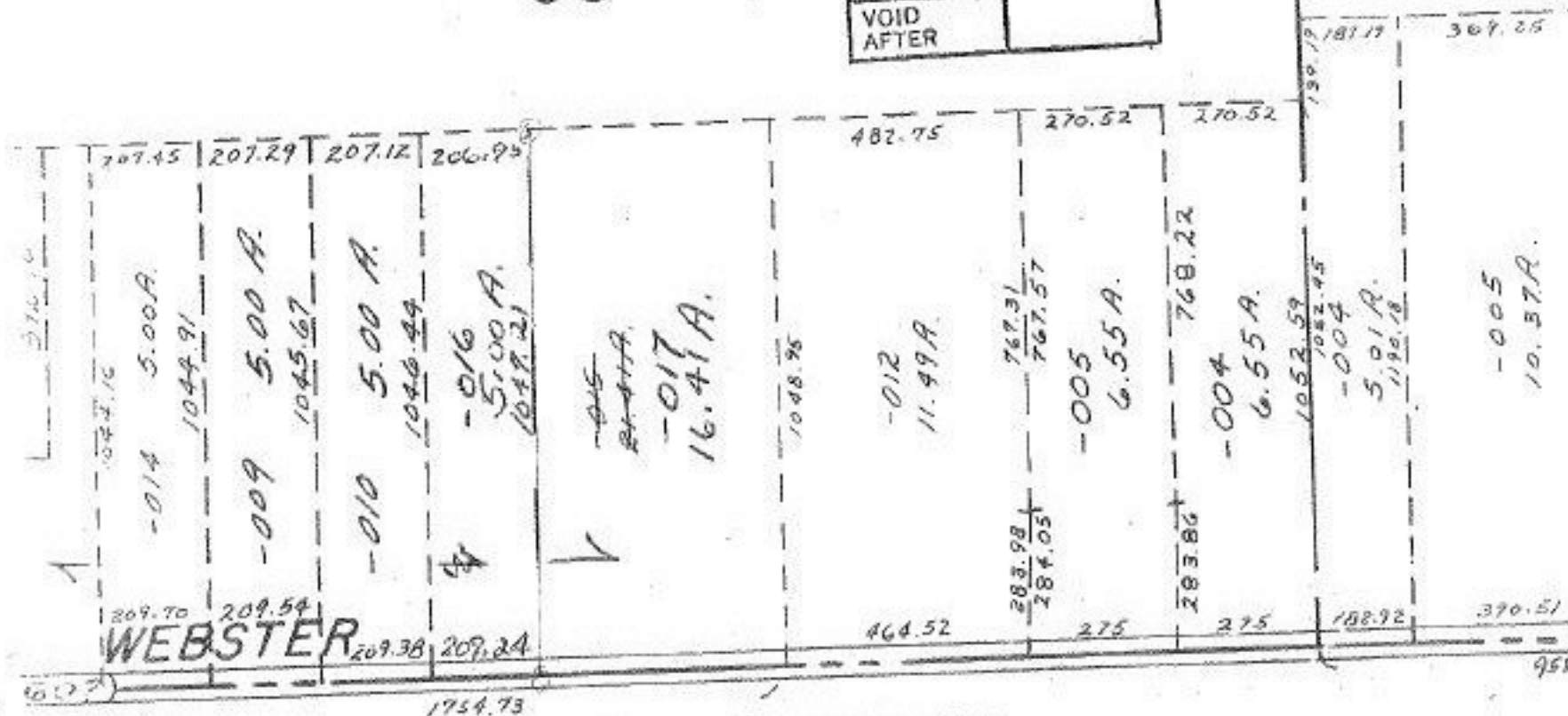
- 001
50.00A.

10548 C.F.
B-22-77

APPROVED
LORAIN CO. MAP DEPT.
DATE 5-19-77
PAGE 15-6
BY <i>J. [Signature]</i>
VOID AFTER

- 002
50.00A.

95



AGRANGE TWP.

LE: 1" = 400'