

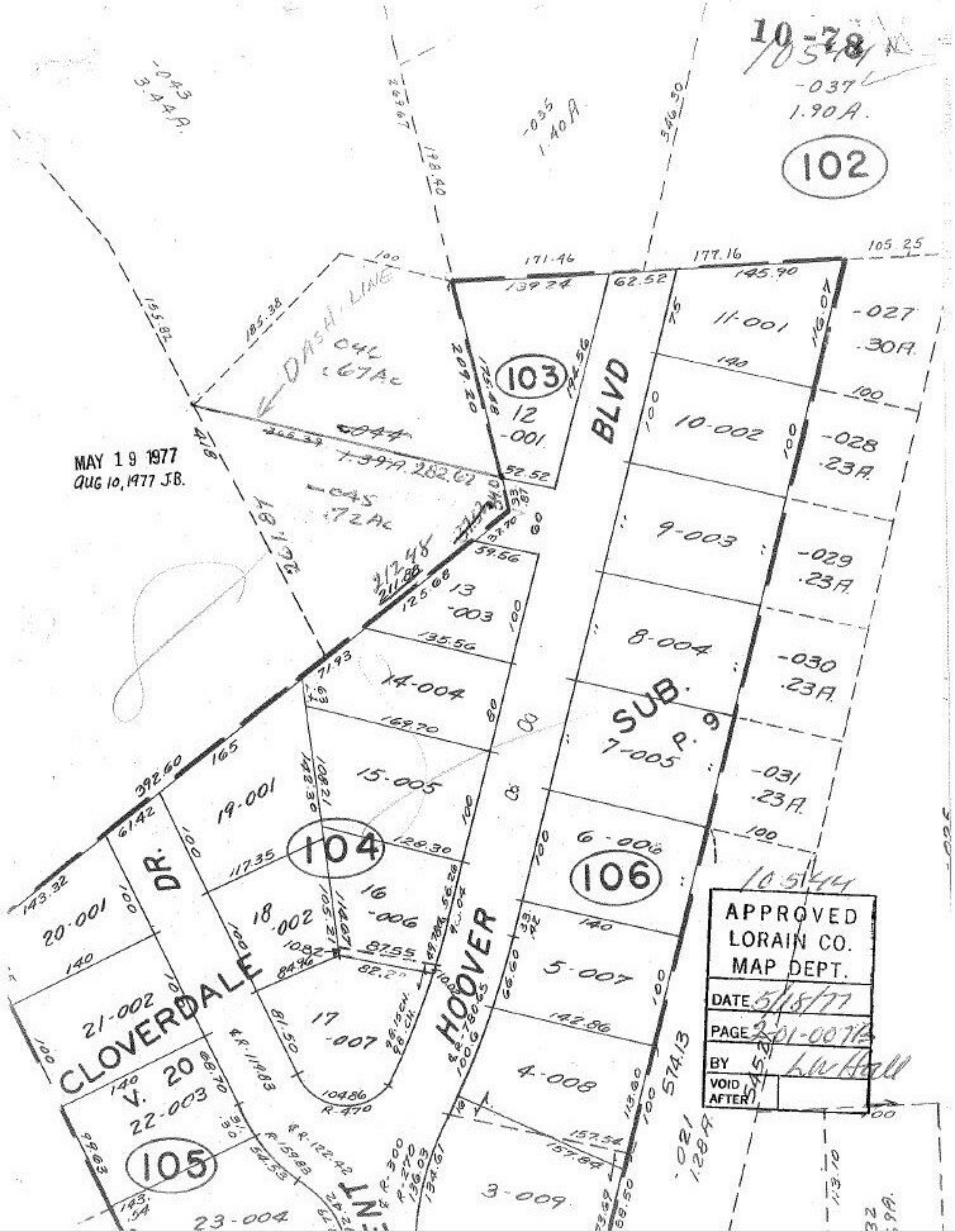
10-78
10544
-037
1.90A.

102

045
3.44A

035
1.40A

MAY 19 1977
AUG 10, 1977 JB.



10544

APPROVED
LORAIN CO.
MAP DEPT.
DATE 5/18/77
PAGE 2-01-0071A
BY <i>h.w. Hall</i>
VOID AFTER