

10542

82-0

1320

332.24

330.55

-069
4.35 A

-077
41.50 AC

-057
5.00A
10542

455.55
217.80
437.75

MAY 20 1977

135

655.55

325

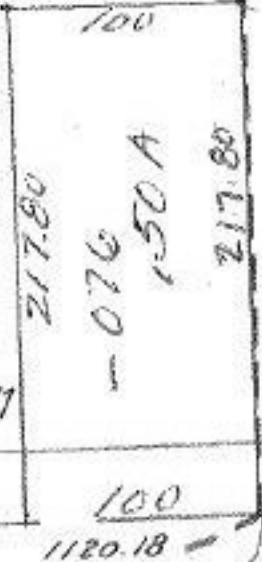
1.01 A

325

-068

10542

APPROVED	
LORAIN CO.	
MAP DEPT.	
DATE	5/18/77
PAGE	10-00-024A
BY	<i>[Signature]</i>
VOID	
AFTER	



221.22
BANKS

135

688.46

688.46

100
1120.18

33