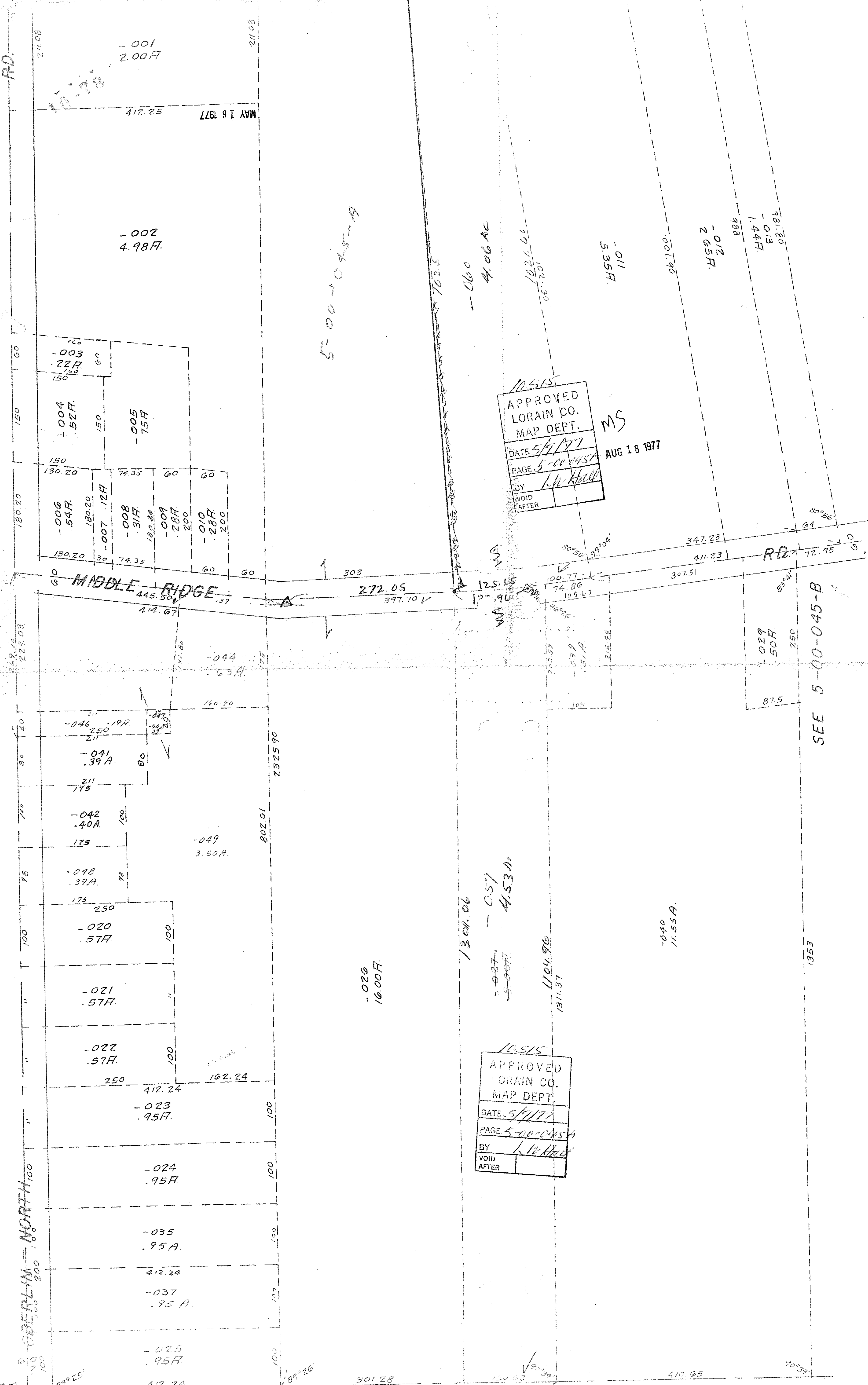


10514

SEE-5-C



10515  
 APPROVED  
 LORAIN CO.  
 MAP DEPT.  
 DATE 5/9/77  
 PAGE 5-00-045-A  
 BY L.W. K...  
 VOID AFTER

MS  
 AUG 18 1977

10515  
 APPROVED  
 LORAIN CO.  
 MAP DEPT.  
 DATE 5/9/77  
 PAGE 5-00-045-A  
 BY L.W. K...  
 VOID AFTER

1001.90  
 1021.30  
 102-05.04  
 054-011  
 3.62A, 5.35A, 4.7A  
 796.06  
 981.80

1/45.50  
 272.05  
 717.55

SEE 5-00-036-B

SEE 5-00-045-B

OPERLIN - NORTH