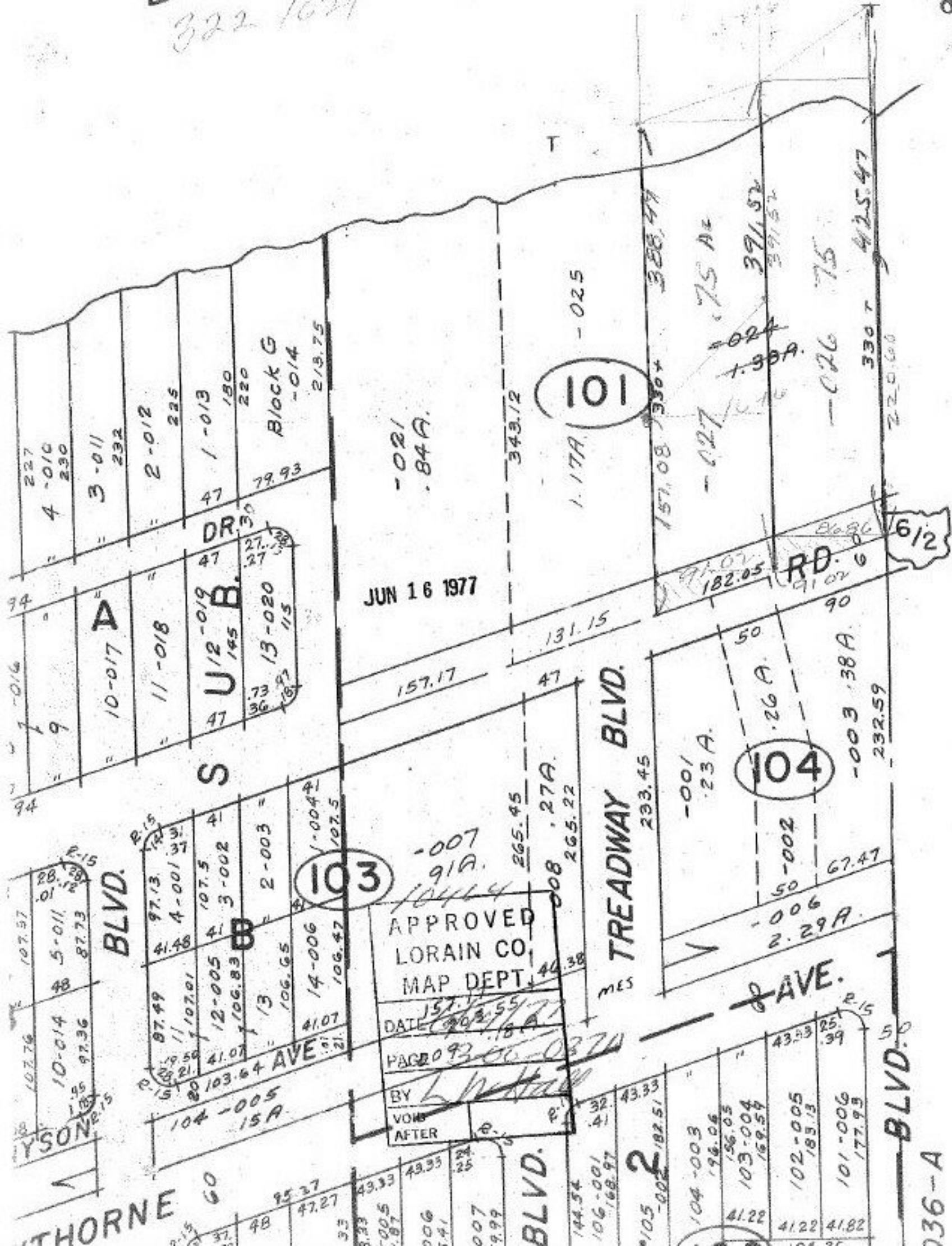


Erie

322 1021

10-78-82-01
10464



JUN 16 1977

APPROVED
LORAIN CO.
MAP DEPT.

DATE 12/25/77

PAGE 93

BY [Signature]
VOID AFTER

101

104

103

THORNE GO

BLVD. 1036-A

TREADWAY BLVD.

AVE.

612