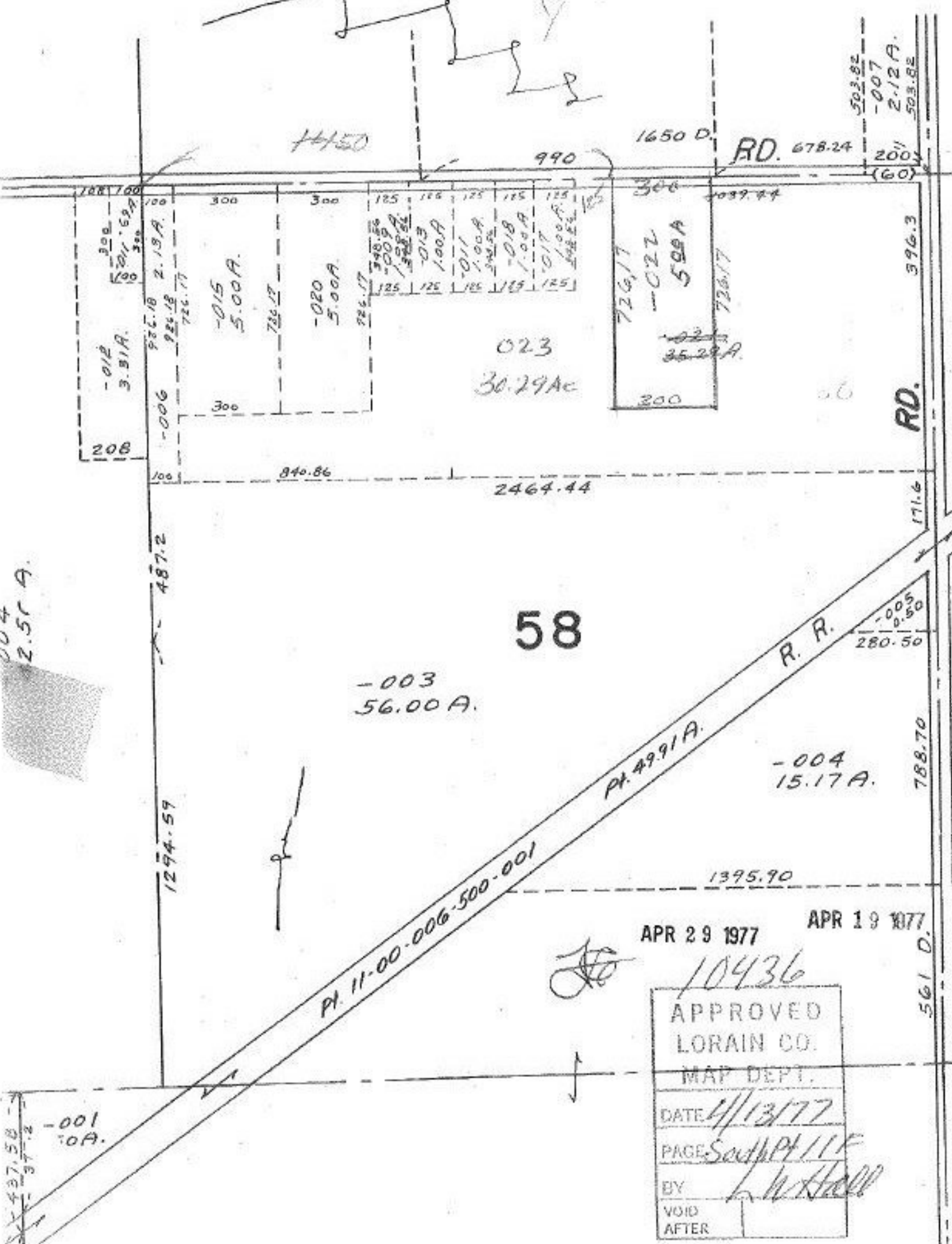


10436

10436-01

004  
2.51 A.



58

-003  
56.00 A.

023  
30.29 Ac

-004  
15.17 A.

APR 29 1977

APR 19 1977

10436

APPROVED  
LORAIN CO.  
MAP DEPT.

DATE 4/13/77

PAGE South Pt 11A

BY L. W. Hall

VOID  
AFTER

-001  
10A.