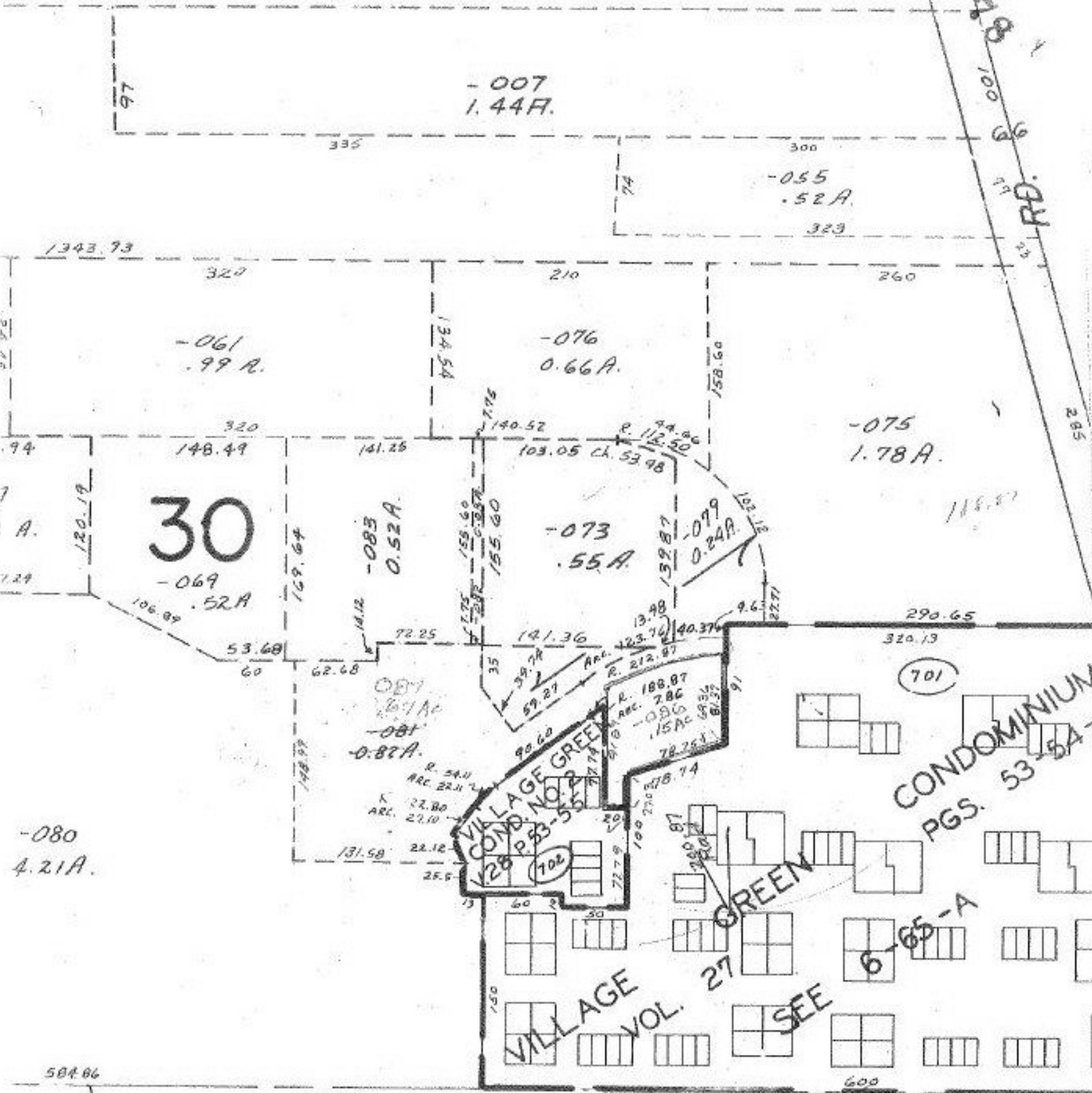


SEE 6-47

10435 10th RD.



-061
.99 A.

-007
1.44 A.

-055
.52 A.

-076
0.66 A.

-075
1.78 A.

30

-073
.55 A.

-079
0.24 A.

-083
0.52 A.

-080
4.21 A.

-081
0.82 A.

701

VILLAGE GREEN
COND. NO. 2
P. 83-55

CONDOMINIUM
PGS. 53-54

VILLAGE GREEN
VOL. 27
SEE

6-65-A

APR 19 1977

APPROVED
LORAIN CO.
MAP DEPT.

DATE 4/13/77

PAGE 6-65

BY L. N. Hall

10435
C.F.
8-25-77

Pt. - 015

Pt 7.29 A.

-013
4.21 A.