

* See Pg 03-00-059B
Also

3-00-03-B 03-00-059-000-019
33-69

03-00-059-000-019

Pt. 428
Pt. 425A

03-00-060-020

Z

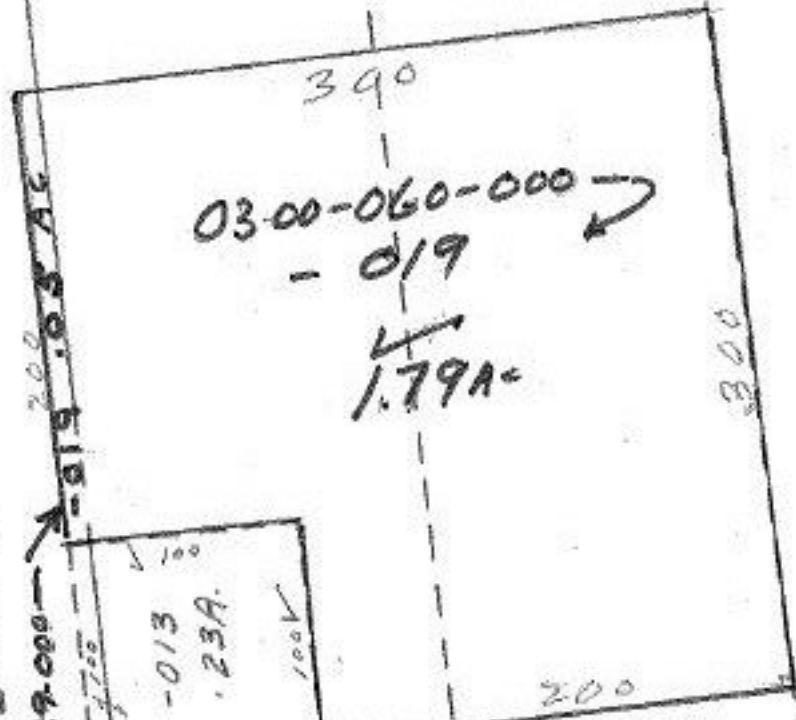
Pt. 419
Pt. 7273A

Pt. -003
Pt. 13.19A

Pt. -004

Pt. 46.93A

10424
10-78



10424
 APPROVED
 LORAIN CO.
 MAP DEPT.
 DATE 4/11/77
 PAGE 03-00-060B
 03-00-059B
 BY A.W. [Signature]
 VOID AFTER

MAY 27 1977
 [Signature]
 APR 19 1977