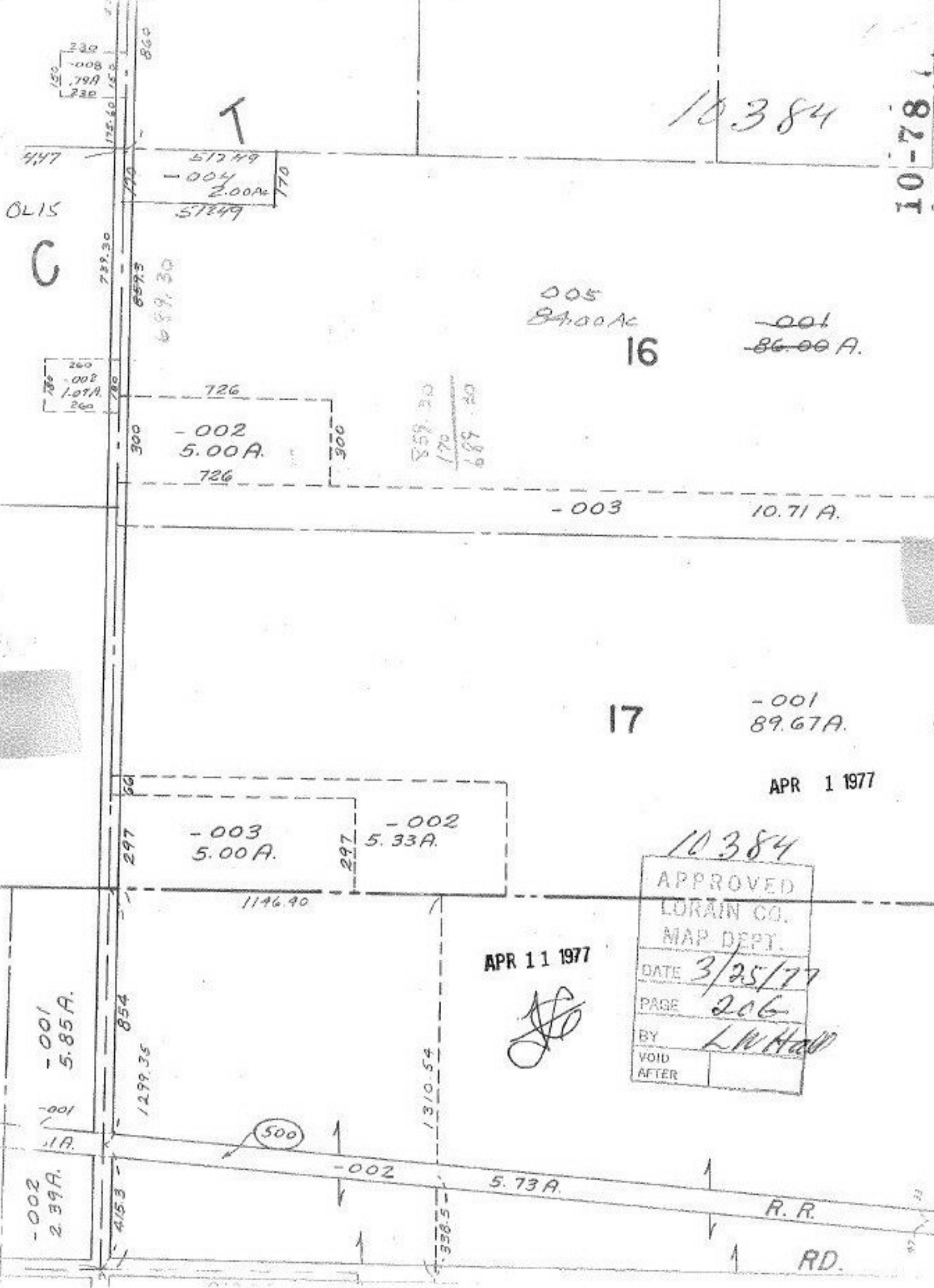


10-82-01

10384



005  
84.00A  
16

-001  
86.00A.

51249  
-004  
2.00A  
51249

726  
-002  
5.00A.  
726

859.30  
170  
689.30

-003 10.71A.

17 -001 89.67A.

APR 1 1977

-003 5.00A.  
-002 5.33A.

1146.90

APR 11 1977

10384

APPROVED	
LORAIN CO.	
MAP DEPT.	
DATE	3/25/77
PAGE	206
BY	L.W. Hall
VOID AFTER	

-001 5.85A.

-001 1A.

-002 2.39A.

854  
1299.35

1310.54

-002 5.73A.

R.R.  
RD.

(500)

398.5

417

C

789.30

659.30

300

300

297

297

56

175.60

860

230  
-008  
799  
230

260  
-002  
1.01A.  
260