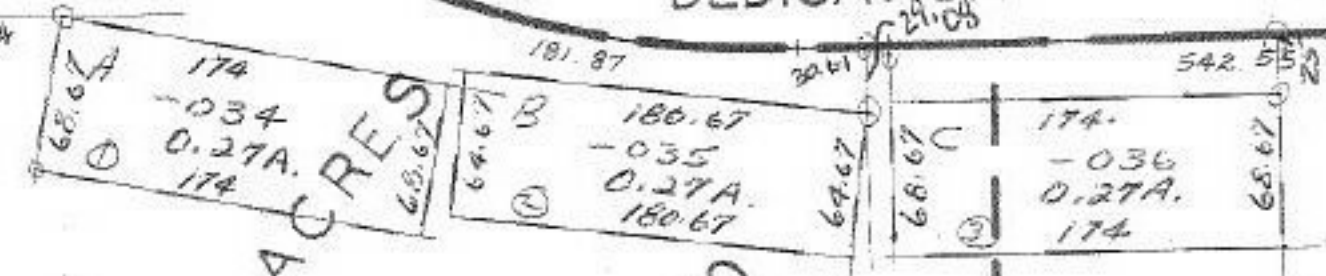


2.12 A.

SHAFFER 900 -004 STREET SUB. N.C. BLOCK D?

460.24 -049 71.05 A
500
PLAT V.27 P.61 DR. 60

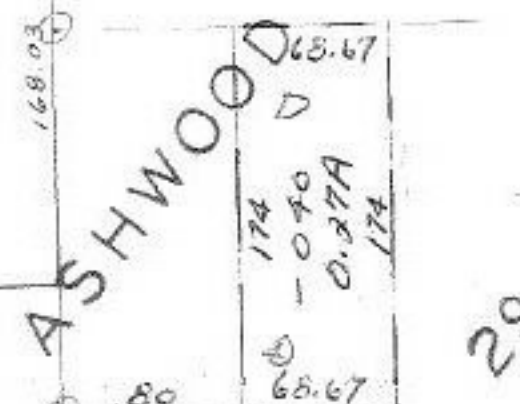
ADMIRALTY



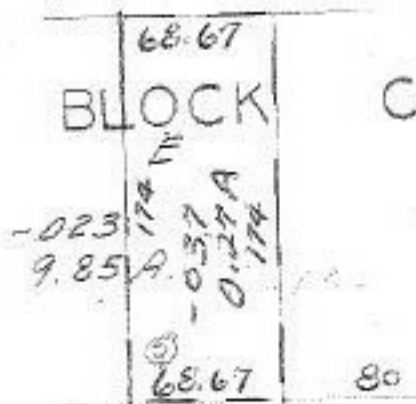
PG. 10

MAY 6 1977

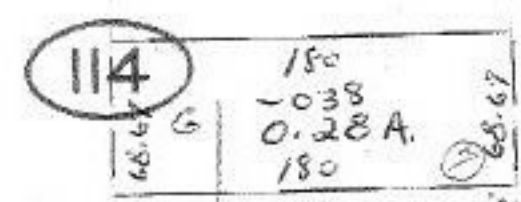
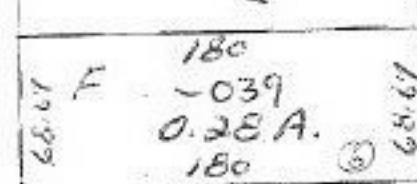
#10345
 APPROVED
 LORAIN CO.
 MAP DEPT.
 DATE 3-11-77
 PAGE 2 of 2005 B
 BY *J. Ballant*
 VOID AFTER



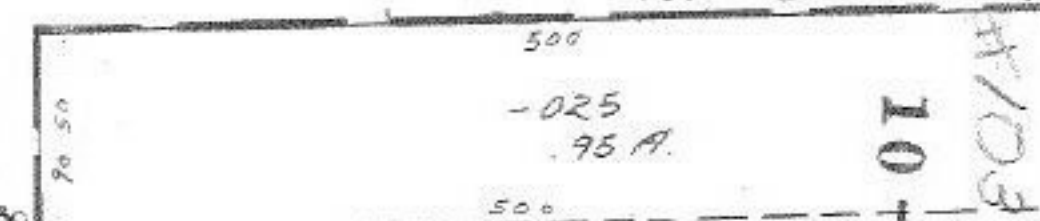
-041
5.20A.
5.17A.



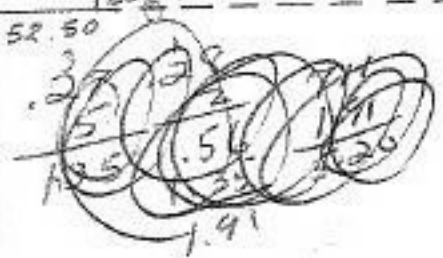
VOL. 29



114



#10345
10-78



MAR 14 1977

2-028

ALLOT