

SEE

SEE

10-78

SEE

10-255

100	100
-001	.68F.
-002	.68F.
300	

1072.5

694

#10293

-011
50 92.9

39

APPROVED
LORAIN CO.
MAP DEPT.

FEB 11 1977

DATE 2-11-77

APR 1 1977

PAGE 1-H

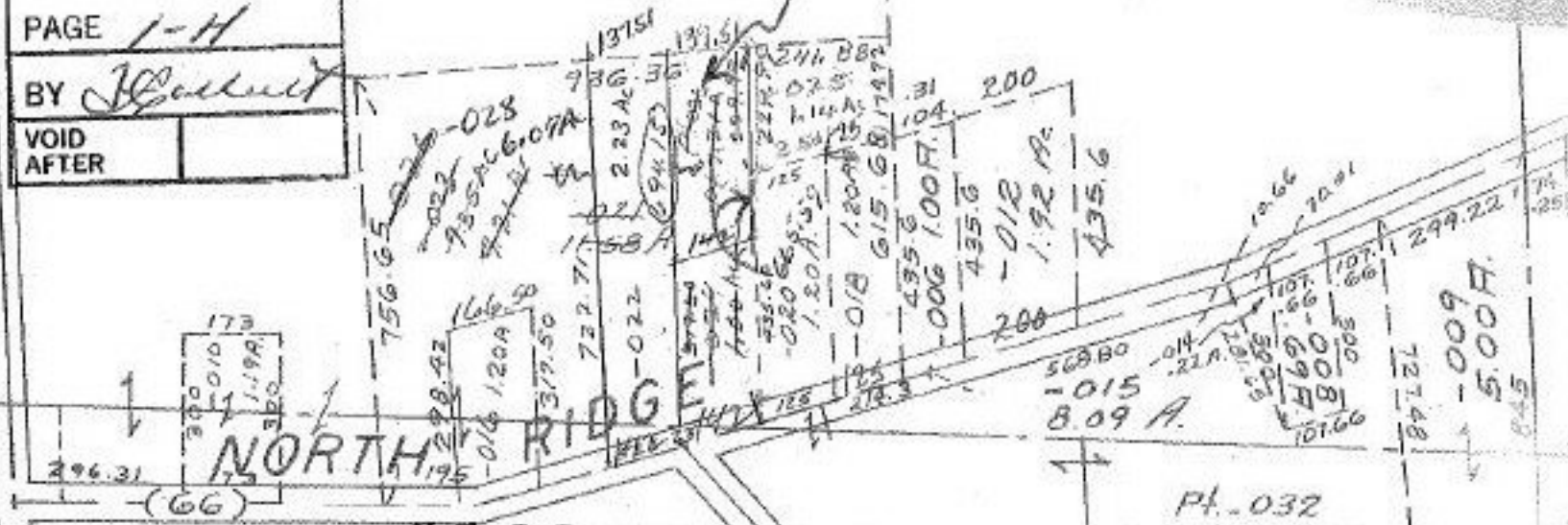
BY *J. Hall*

VOID
AFTER

$$\frac{2.14}{1.14} = 1.87$$

$$\frac{7.21}{1.14} = 6.33$$

$$\frac{6.07}{1.14} = 5.32$$

$$\frac{6.07}{1.14} = 5.32$$


#10255

JAN 14 1977

APR 1 1977

APPROVED
LORAIN CO.
MAP DEPT.

DATE 1-13-77

PAGE 1-H

BY *J. W. Hall*

VOID
AFTER

RICE

Pt. 032
Pt. 2.28F.
554.62

-034
11.46F.

-035
5.00F.

494.8
488.10
784.2