

OHIO

T.P. STA. 520

FEB 11 1977

TURNPIKE

E. W. B. L.

10-286

APPROVED
LORAIN CO.
MAP DEPT.
DATE 2/7/77
PAGE 5-00-089
BY L.V. Hall
VOID AFTER 420P

MS

AUG 15 1977

SEE 6-55

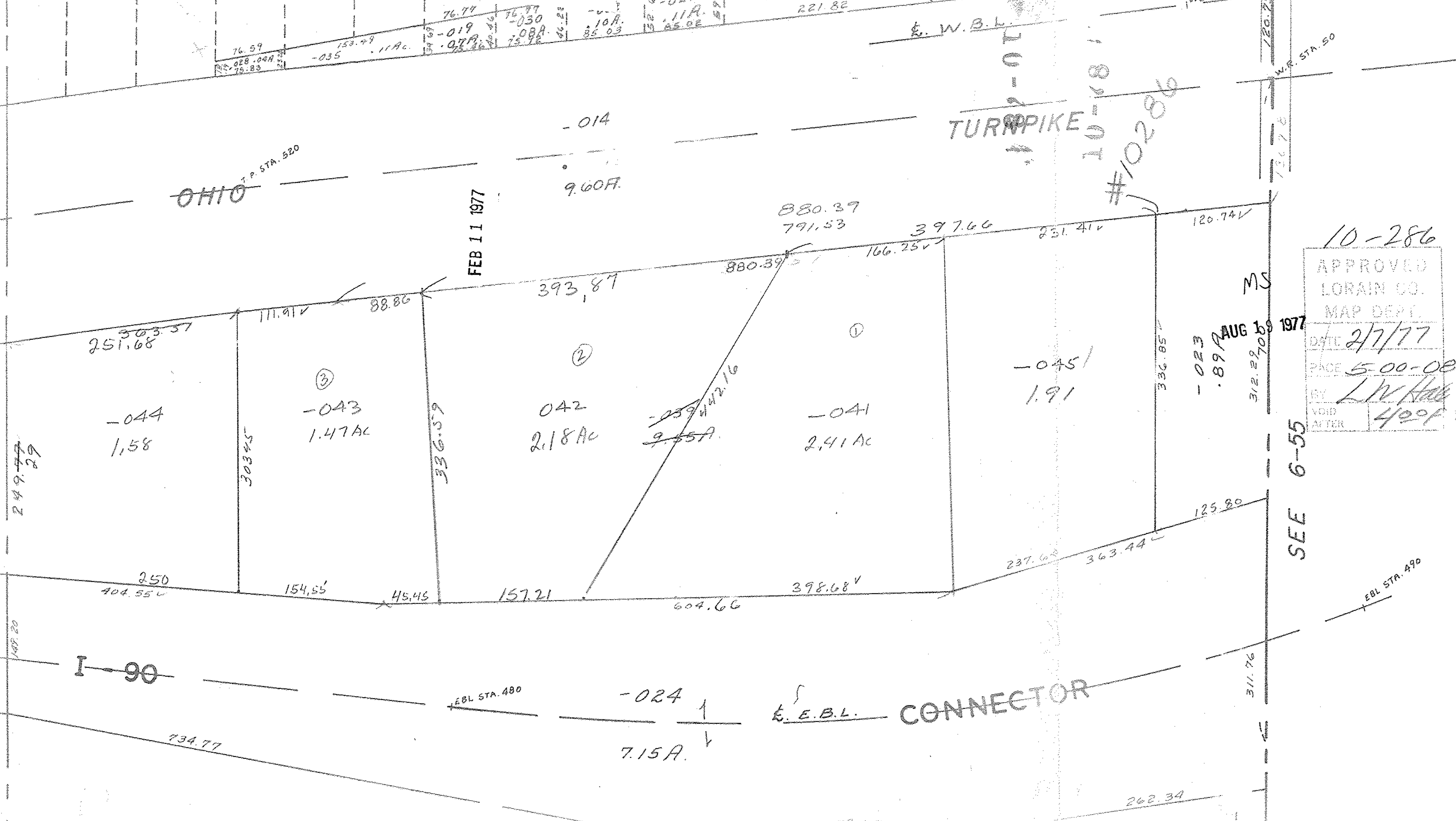
EBL STA. 490

I-90

EBL STA. 480

E. E. B. L.

CONNECTOR



251.68

-044
1.58

③
-043
1.47 AC

②
042
2.18 AC

-041
2.41 AC

-045
1.91

-014
9.60FF

-024
7.15A

-023
1.89A

249.79

148.20

250
404.55

734.77

303.57

111.91

154.55

88.86

45.45

336.59

157.21

393.87

-039
9.55A

604.66

880.39
791.53

398.68

397.66
166.25

237.63

363.44

251.41

336.85

125.80

311.76

120.74

136.76

W.F. STA. 50

W.B.L. STA 494

372.62

262.34